

CAMERON ANNE MASON

*FIELDS*

MARCH 2019



FOSTER/WHITE GALLERY





Cover: *True to One Thing*, textile on panel, 27 x 34.75 inches  
Above: *Measuring the Moon*, textile on panel, 32 x 20 inches





*Hard Red Winter*, textile on panel, 17.75 x 17.75 inches

CAMERON ANNE MASON  
*FIELDS*

You lie on your back in the middle of a field of grass, heavy seedheads waving above, and watch a plane pass across the perfect blue sky of a summer day. Flying high above agricultural lands in that perfectly sealed and engineered machine you see the man-made geometry of fields and how their rectangularity flows into and around natural features of the land. These two experiences, micro and macro, and the privilege to observe it, are the seeds of this body of work: *Fields*.

Many of these works include direct dye printing with grass I collected from vacant or ignored corners of my neighborhood. I was surprised that these “wild” Seattle grasses were so varied, anything but a monoculture, each stalk making its individual mark. I combine these fabrics with others dyed using many techniques of surface design including binding, resist, folding, rust transfer, and screen printing. Free-motion embroidery finishes each piece, both embellishing and binding it together.

Fabric is fundamental to my artistic process. It is an intimate part of our lives. It protects us from the elements, gives us comfort, and is a means to express ourselves. It is sensual and essential. I am drawn to fabric because of its changeability and its constancy.

Nature closely observed and recorded, and the evidence of human hands upon it, are the themes of my artwork. Time is the inexorable subtext. My work is rooted in the Northwest, highlighting the challenges of a changing environment by looking closely at our geography’s emblematic natural forms.



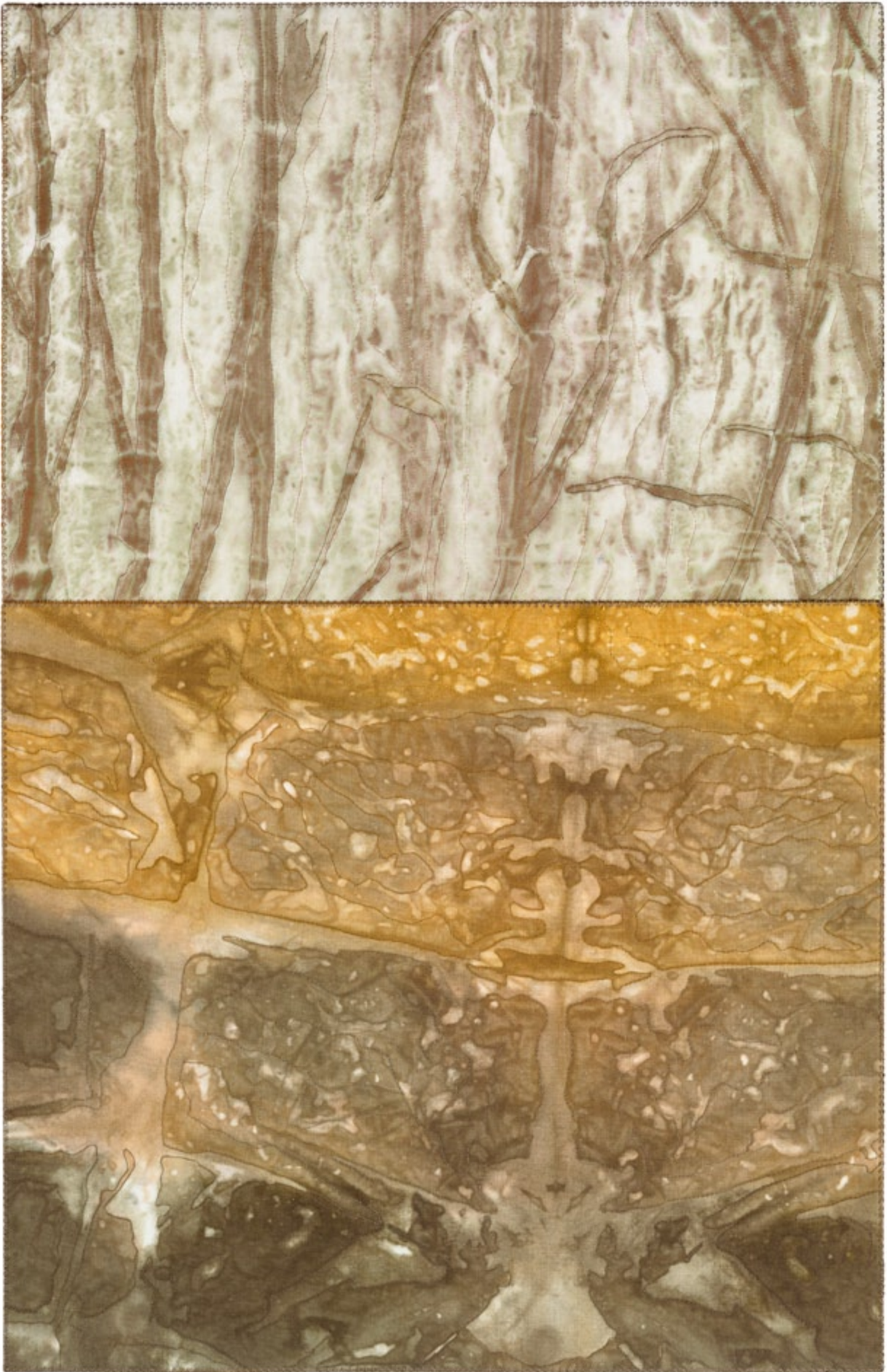
*Bright Abundance*, textile on panel, 17.75 x 41 inches





*Every Grain From Its Shroud*, textile on panel, 30 x 30 inches





*Deep Soil*, textile on panel, 28 x 18 inches





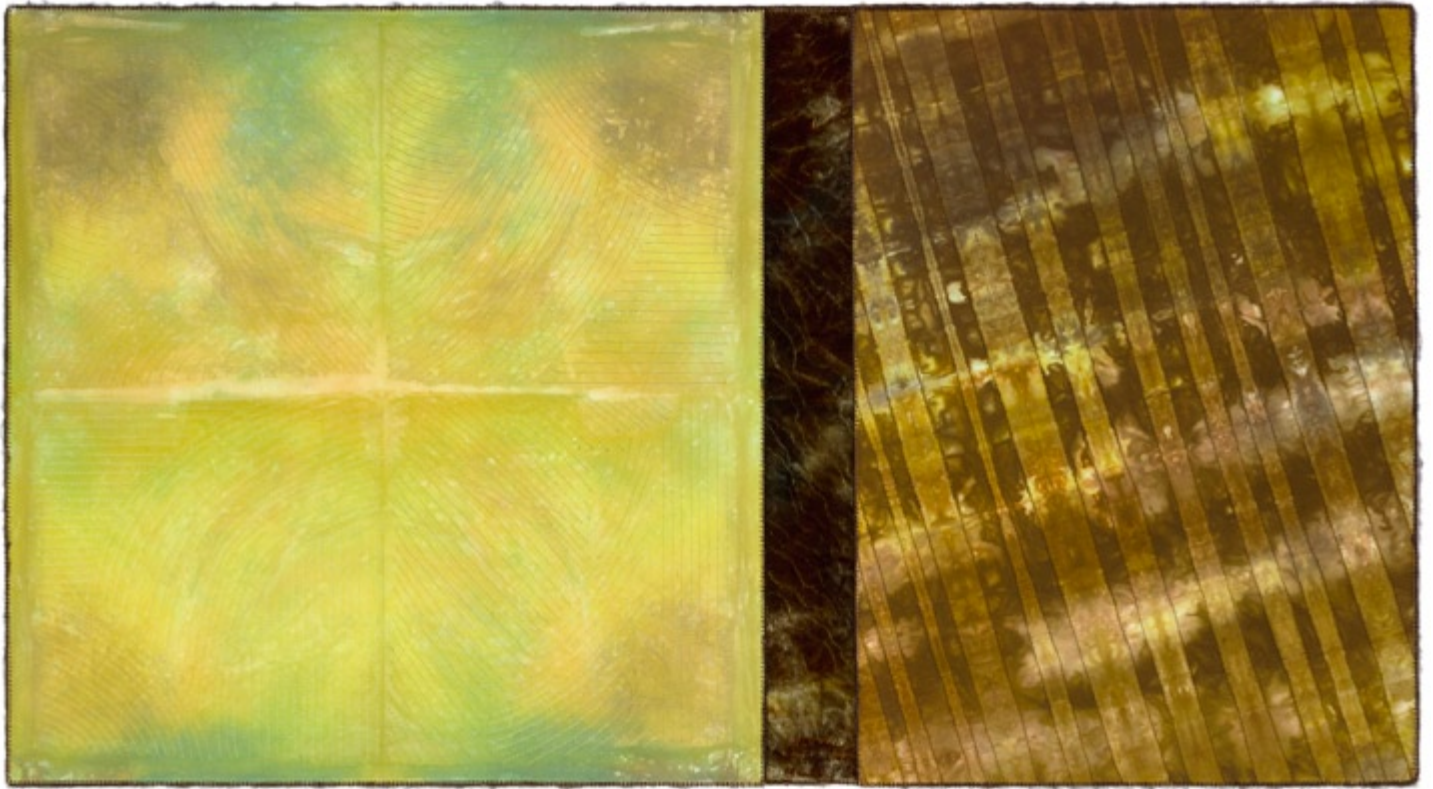
*Clouds Lie*, textile on panel, 28 x 24 inches





*Cast a Shadow on the Sky*, textile on panel, 32 x 20 inches





*Spring Greening*, textile on panel, 21.5 x 39 inches





*Nature's Prophecy*  
textile on panel  
17.5 x 17.5 inches



*Spring's Echo*  
textile on panel  
17.5 x 17.5 inches





*Of the Earth*  
textile on panel  
28 x 14 inches





*Sure Patchwork*, textile on panel, 32 x 32 inches





*Soft White Summer*, textile on panel, 17.75 x 17.75 inches





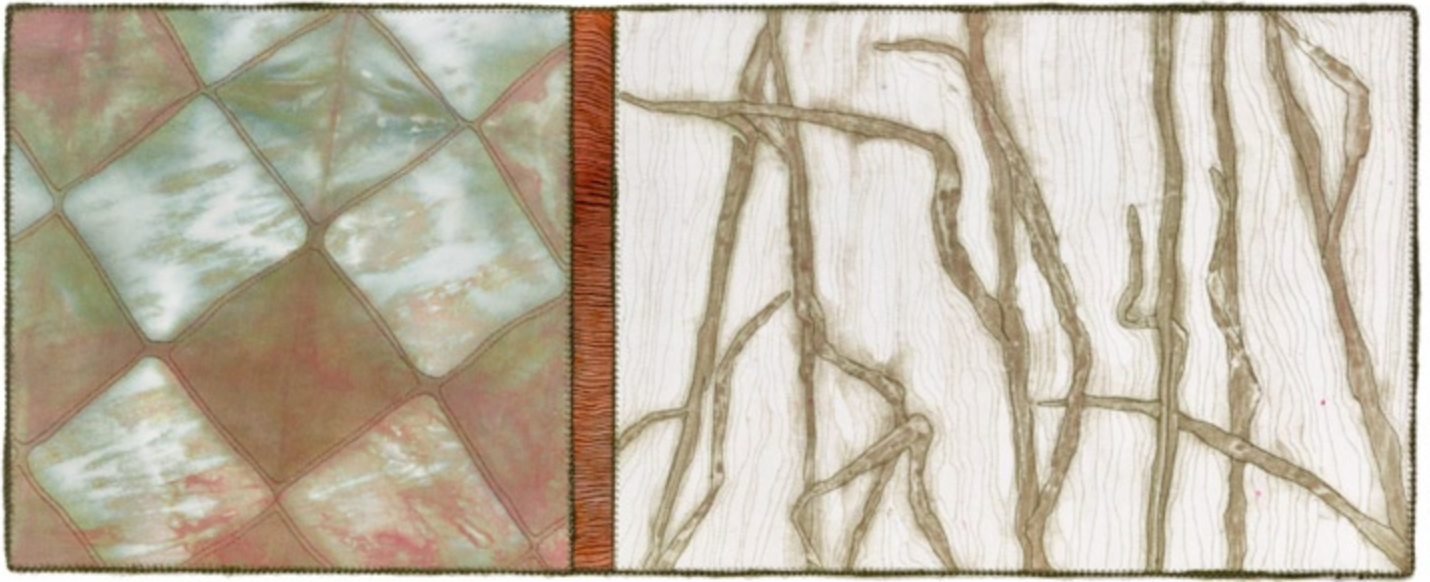
*Window*, textile on panel, 28 x 18 inches





*Rapture of Open Spaces*, textile on panel, 30 x 30 inches





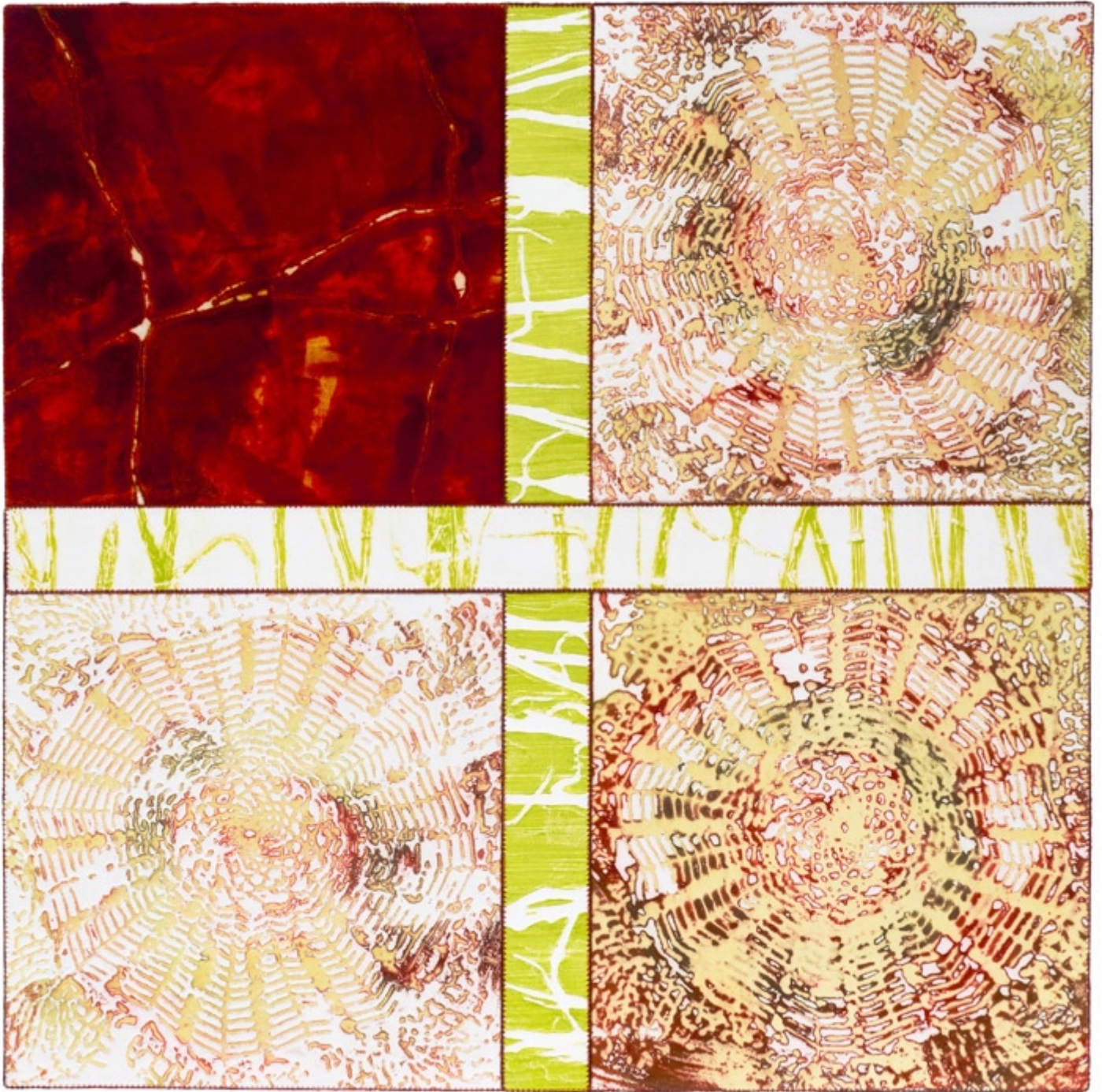
*What Remains*, textile on panel, 12 x 30 inches





*One Eye to the Earth*, textile on panel, 15.75 x 30 inches





*Heartland*, textile on panel, 32 x 32 inches





*Windust*, textile, 18.5 x 14.5 x 4.25 inches





*Riparia*, textile, 31.75 x 10.5 x 4 inches





*Colfax*, textile, 28.25 x 10 x 4.25 inches



## CAMERON ANNE MASON

### Education

- 1989 Art Institute of Seattle, Honors in Visual Communications, Seattle, WA  
1983-85 University of Washington, Liberal Arts study

### Exhibitions

- 2019 'Fields,' Foster/White Gallery, Seattle, WA  
2016 'Bellwether Sculpture Biennial,' Bellevue City Hall, Bellevue, WA  
'Branching,' Foster/White Gallery, Seattle, WA  
2014 'Whole Cloth: Soft Sculptures by Larry Calkins and Cameron Anne Mason,'  
Aljoja Thornton Place, Seattle, WA  
2013 'Madrone,' Foster/White Gallery, Seattle, WA  
2012 'Surface. Form. Stitch.,' Fairbanks Art Gallery, Oregon State University, Corvallis, OR  
2011 'Soft Earth,' Foster/White Gallery, Seattle, WA  
2010 New Artist Introduction, Foster/White Gallery, Seattle, WA  
2009 West Seattle Art Walk, The Body Bar, Seattle, WA  
2009 'Earth and Sky,' Phinney Center Gallery, Seattle, WA

### Installations

- 2018 'Sky Bound,' Burning Man Festival, Black Rock City, NV  
2014 'Playastan Crossroads,' Burning Man Festival, Black Rock City, NV  
2013 'Susurrations,' Storefronts Bellevue, Bellevue, WA  
'Soft Coral,' Bellevue Arts Museum Featured Object, Bellevue, WA  
2012 'The Orchard Room,' Heaven and Earth IV: Rootbound, Center on Contemporary Art  
Temporary Installation, Seattle, WA  
'Fantastic Fibers,' Jurors Choice Recognition, Yeisler Art Center, Paducah, KY  
'Bellwether Art Walk,' Bellevue, WA

### Selected Group Shows

- 2018 'Contemporâneo 2019,' São Paulo & Rio, Brazil  
2017 'Fiber Fusion,' Schack Art Center, Everett, WA  
2014 'Gea,' 'Miniartextile,' Como, Italy  
'Forming,' Alden B. Dow Museum of Science and Art,  
Midland Center for the Arts, Midland, MI  
'Reaching Beyond: Northwest Designer Craftsman at 60,'  
Whatcom Museum, Bellingham, WA  
2013 'Dancing Surfaces: Surface Design Association,' Washington, Seattle, WA  
Anacortes Arts Festival: Juried Arts at the Port, Anacortes, WA  
Surface Design Association Members Show, San Antonio, TX  
'Salsa: CQA at the Mighty Tieton,' Tieton, WA  
'Fantastic Fibers,' Paducah, KY  
2012 'Bellwether: reGeneration,' Bellevue, WA  
'The Softer Side of Death,' Lundgren Monuments, Seattle, WA  
'Preview Exhibition,' Foster/White Gallery, Seattle, WA  
2011 'Craftforms,' Wayne Art Center, Wayne, PA



2010 'Set the Table for SAM,' Seattle Art Museum Event, Seattle, WA  
'Easelstan 5 @ 10,' Phinney Center Gallery, Seattle, WA  
Rio Patchwork Design Show, Rio de Janeiro, Brazil  
'Olive Branch,' Foster/White Gallery, Seattle, WA  
Bellwether Art Walk, Bellevue, WA

#### Awards

2012 Honorable Mention, Freedom to See Ourselves: A Celebration of Culture  
2010 Juror's Choice Award, Fantastic Fibers  
Audience Choice Award, Rio Patchwork Design  
2005 Juror's Top Pick, Greenwood Art Walk

#### Teaching

2005-present Pratt Fine Arts Center, Surface Design instructor, Seattle, WA  
2012 Workshop Instructor, SDA/SAQA Conference, Identity: Context and Reflection, Philadelphia, PA  
Guest Instructor, University of Washington School of Art, Seattle, WA  
2011 Instructor, Made Sewing Studio, Seattle, WA  
2010 Pratt Fine Arts Center, Workshop Instructor, 'Beyond Techniques,' Seattle, WA  
2007-2010 Instructor, Space to Create, Surface Design  
2009 Batik Workshop, Oregon Country Fair, Veneta, OR  
2008 Bellevue Arts Museum, Demonstration of Surface Design technique  
Contemporary Quilt Art Association, Presentation Festival Arts: Community, Artistry, Celebration  
Batik Workshop, Seattle Tilth, Seattle, WA  
2002 Giant Puppet Installation and Public Art Booth, Bumbershoot, Seattle, WA

Complete resume available upon request

## FOSTER/WHITE GALLERY

220 THIRD AVENUE SOUTH, SEATTLE, WA 98104 SEATTLE@FOSTERWHITE.COM  
WWW.FOSTERWHITE.COM 206.622.2833

Copyright © 2019 Foster/White Gallery