

ALLISON COLLINS  
*ANOTHER TURN*



OPENING RECEPTION: NOVEMBER 6, 2014, 6-8 PM  
ARTIST IN ATTENDANCE  
EXHIBITION: NOVEMBER 6 - NOVEMBER 29, 2014



ALLISON COLLINS  
*ANOTHER TURN*

Beloved Northwest artist Allison Collins has been exhibiting art with Foster/White Gallery since the early 1980s. Her timeless landscapes transport the viewer to a place of wonder, where adventurous road trips and looping playlists fill the air with discovery.

As we journey with her to remote landscapes, we embrace the notion that open expansive stretches of land are in short supply in our day to day lives. As stated by Allison, "I wish you a long unfolding journey filled with new discoveries and continuing revelations; a visual trip with room for your own observations about landscapes, abstractions, color and place."

Collins is a graduate of the University of Washington and holds an MFA from the Otis Art Institute.

We are pleased to present her fourteenth solo show at Foster/White Gallery.

Front cover: *Vista Turnout*, 2014, oil on canvas, 40 x 30 inches  
This page: *August Tapestry*, 2014, oil on canvas, 30 x 30 inches

[www.fosterwhite.com](http://www.fosterwhite.com)

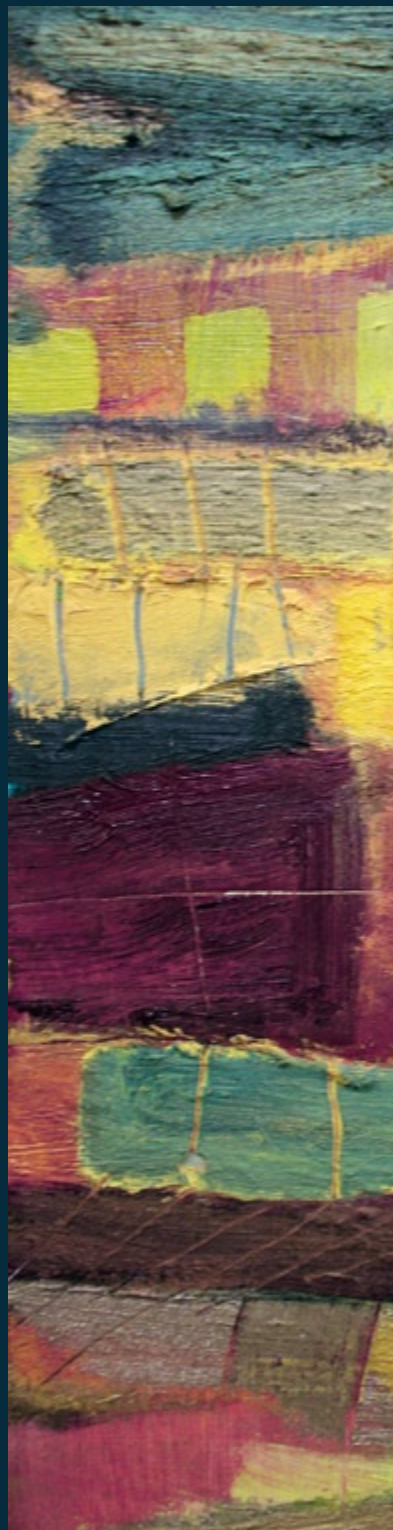




Allison Collins, *Approaching Storm*, 2014, oil on canvas, 50 x 45 inches

[www.fosterwhite.com](http://www.fosterwhite.com)

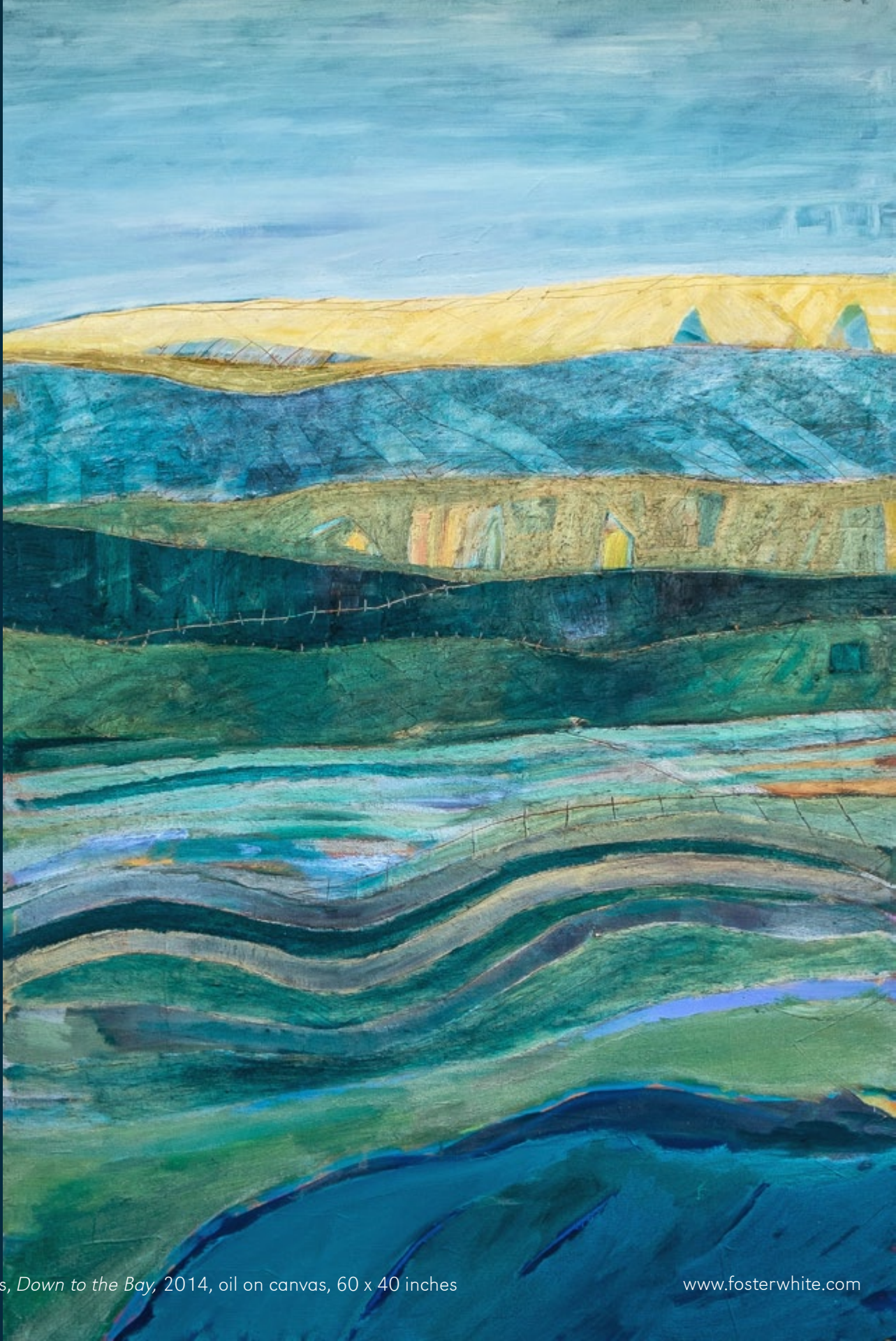




Allison Collins, *Below the Sky*, (detail at left), 2014, oil on canvas, 60 x 36 inches

[www.fosterwhite.com](http://www.fosterwhite.com)





Allison Collins, *Down to the Bay*, 2014, oil on canvas, 60 x 40 inches

[www.fosterwhite.com](http://www.fosterwhite.com)





Allison Collins, *Fine Tuning*, 2014, oil on canvas, 24 x 16 inches

[www.fosterwhite.com](http://www.fosterwhite.com)





Allison Collins, *Hanalei*, 2014, oil on canvas, 20 x 16 inches

[www.fosterwhite.com](http://www.fosterwhite.com)





Allison Collins, *Hanalei (detail)*, 2014, oil on canvas, 20 x 16 inches

[www.fosterwhite.com](http://www.fosterwhite.com)





Allison Collins, *Nightfall*, 2014, oil on canvas, 36 x 30 inches

[www.fosterwhite.com](http://www.fosterwhite.com)





Allison Collins, *Pahoa*, 2014, oil on canvas, 20 x 16 inches

[www.fosterwhite.com](http://www.fosterwhite.com)









Allison Collins, *Shoal Break*, 2014, oil on canvas, 20 x 16 inches

[www.fosterwhite.com](http://www.fosterwhite.com)









Allison Collins, *The Big Island*, 2014, oil on canvas, 30 x 30 inches

[www.fosterwhite.com](http://www.fosterwhite.com)





Allison Collins, *Two Trees*, 2014, oil on canvas, 30 x 30 inches

[www.fosterwhite.com](http://www.fosterwhite.com)





Allison Collins, *Late Harvest*, 2014, oil on canvas, 30 x 30 inches





Allison Collins, *Teanaway*, 2014, oil on canvas, 50 x 45 inches

[www.fosterwhite.com](http://www.fosterwhite.com)



## ALLISON COLLINS

### Education

1977-78	Whitney Museum of American Art, New York, NY
1977	MFA, Otis Art Institute, Los Angeles, CA
1975	BA, BFA, University of Washington, Seattle, WA
1967	Harbor Junior College
1963-67	Chouinard Art Institute, Los Angeles, CA

### Solo Exhibitions

2014	'Another Turn,' Foster/White Gallery, Seattle, WA
2011	'Unfolding Journey,' Foster/White Gallery, Seattle, WA
2009	'Methow to Montalcino,' Foster/White Gallery, Seattle, WA
2007	'Topography,' Foster/White Gallery, Seattle, WA
2005	Foster/White Gallery, Seattle, WA
2003	Foster/White Gallery, Seattle, WA,
2001	'Il Val d'Orcia,' Foster/White Gallery, Seattle, WA
2000	Foster/White Gallery, Kirkland, WA
1999	Foster/White Gallery, Seattle, WA
1998	Foster/White Gallery, Seattle, WA
1990	Foster/White Gallery, Seattle, WA
1989	Seattle Pacific University, Seattle, WA
1986	Foster/White Gallery, Seattle, WA
1984	Foster/White Gallery, Seattle, WA
1983	Foster/White Gallery, Seattle, WA
1982	Foster/White Gallery, Seattle, WA

### Selected Group Exhibitions

2013	'The Great Outdoors,' Foster/White Gallery, Seattle, WA
	'Lopez Island Artist Studio Tour,' Lopez, WA
2012	'From Nature,' Confluence Galley, Twisp, WA
2011	'Lopez Island Artist Studio Tour,' Lopez, WA
2010	'Olive Branch,' Foster/White Gallery, Seattle, WA

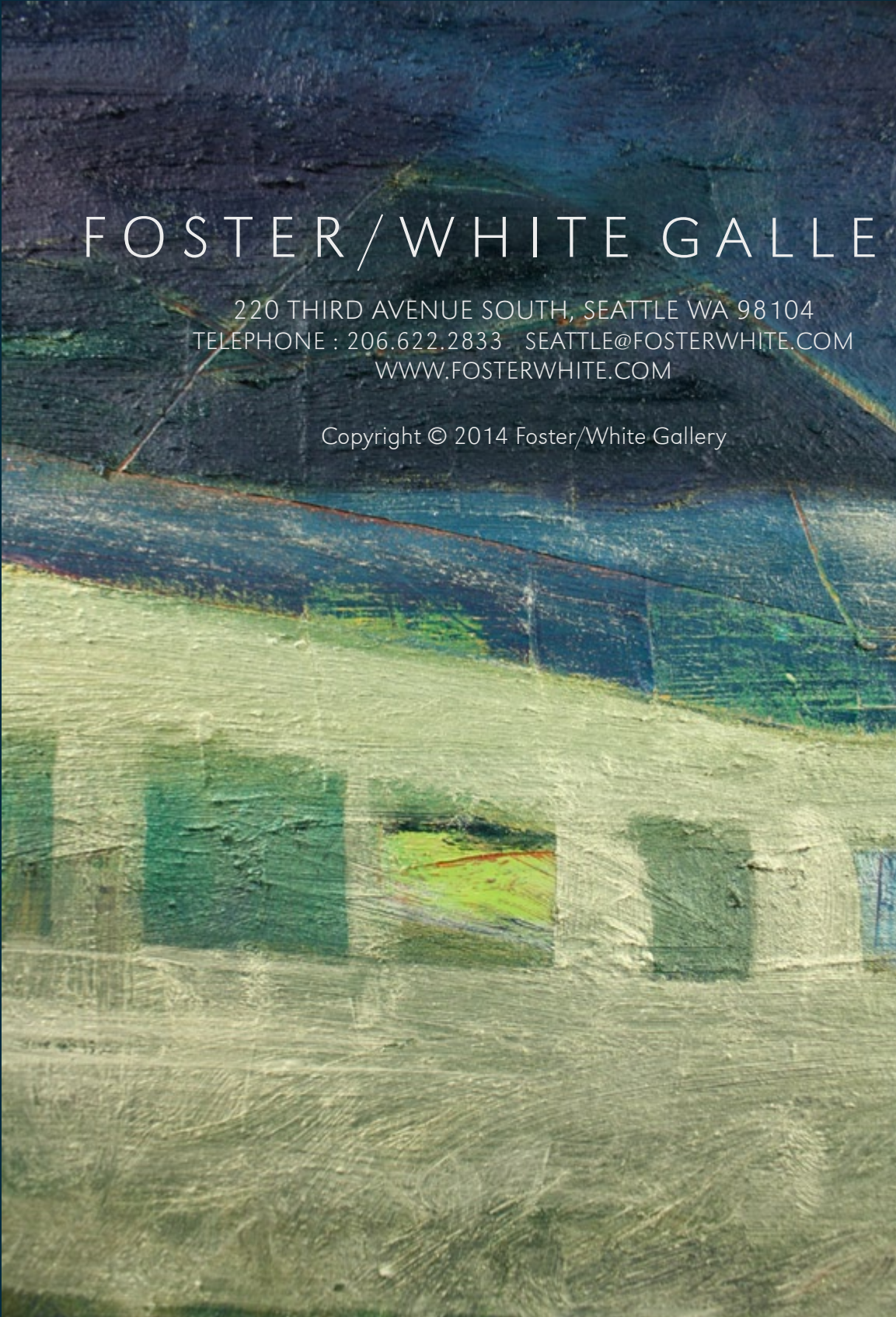


- 2008 'Under the Western Sky,' Confluence Gallery, Twisp, WA
- 2004 Toronto International Art Fair, Toronto, ON
- 'Coloration,' Foster/White Gallery, Seattle, WA
- 'Shifting Vistas,' Foster/White Gallery, Seattle, WA
- 1997 Artwork for AIDS Auction, Seattle, WA
- 'Recent Work by Gallery Artists,' Foster/White Gallery, Seattle, WA
- 'Foster/White Salutes the Women's Caucus for Art National Conference,' Foster/White Gallery, Seattle, WA
- 'Beyond the Boundaries,' Foster/White Gallery in Kirkland, WA
- 1991 Foster/White at Frederick & Nelson, Drawing Show, Seattle, WA
- 'Please and Thank Yous: 100 True Stories,' Tacoma Art Museum, Tacoma, WA
- 'Celebration Especially for Kids,' Bellevue Art Museum, Bellevue, WA
- 1985 Bumberbiennial, Invitational, Seattle, WA
- 1984 Invitational, Bumbershoot, Size, Seattle, WA
- 1983 'Northwest Artists,' Brentwood Gallery, St. Louis, MO
- Piezo Electric, New York, First Show – Five Painters
- Swope Gallery, Los Angeles, CA
- 1982 'Northwest Contemporary Art,' The Squibb Gallery, Princeton, NJ
- Foster/White Gallery, Ninth Anniversary Exhibition, Seattle, WA
- 'Art in the 80's,' Seattle Community College, Invitational, Seattle, WA
- 1981 Pacific Northwest Annual, Bellevue, WA
- 1980 Linda Farris Gallery, Seattle, WA
- 1980 Tacoma Art Museum, New Talent Exhibition, Tacoma, WA
- 1976 Otis Art Institute, Masters Thesis Show, Los Angeles, CA
- 1975 Pacific Northwest Annual Exhibition, Bellevue, WA
- 'Washington State Exhibition of Painting and Sculpture,' Tacoma, WA
- 1969 Polly Friedlander Gallery, Seattle, WA
- Penryn Gallery Group Show, Seattle, WA

#### Selected Collections

Chaffey Corporation, Kirkland, WA  
 City of Seattle, WA  
 Dallas Rehabilitation Institute, Dallas, TX  
 Martex International  
 Neiman Marcus  
 Nordstrom, CA  
 Shidler, McBroom and Gates, Seattle, WA





# FOSTER/WHITE GALLERY

220 THIRD AVENUE SOUTH, SEATTLE WA 98104  
TELEPHONE : 206.622.2833 SEATTLE@FOSTERWHITE.COM  
WWW.FOSTERWHITE.COM

Copyright © 2014 Foster/White Gallery