

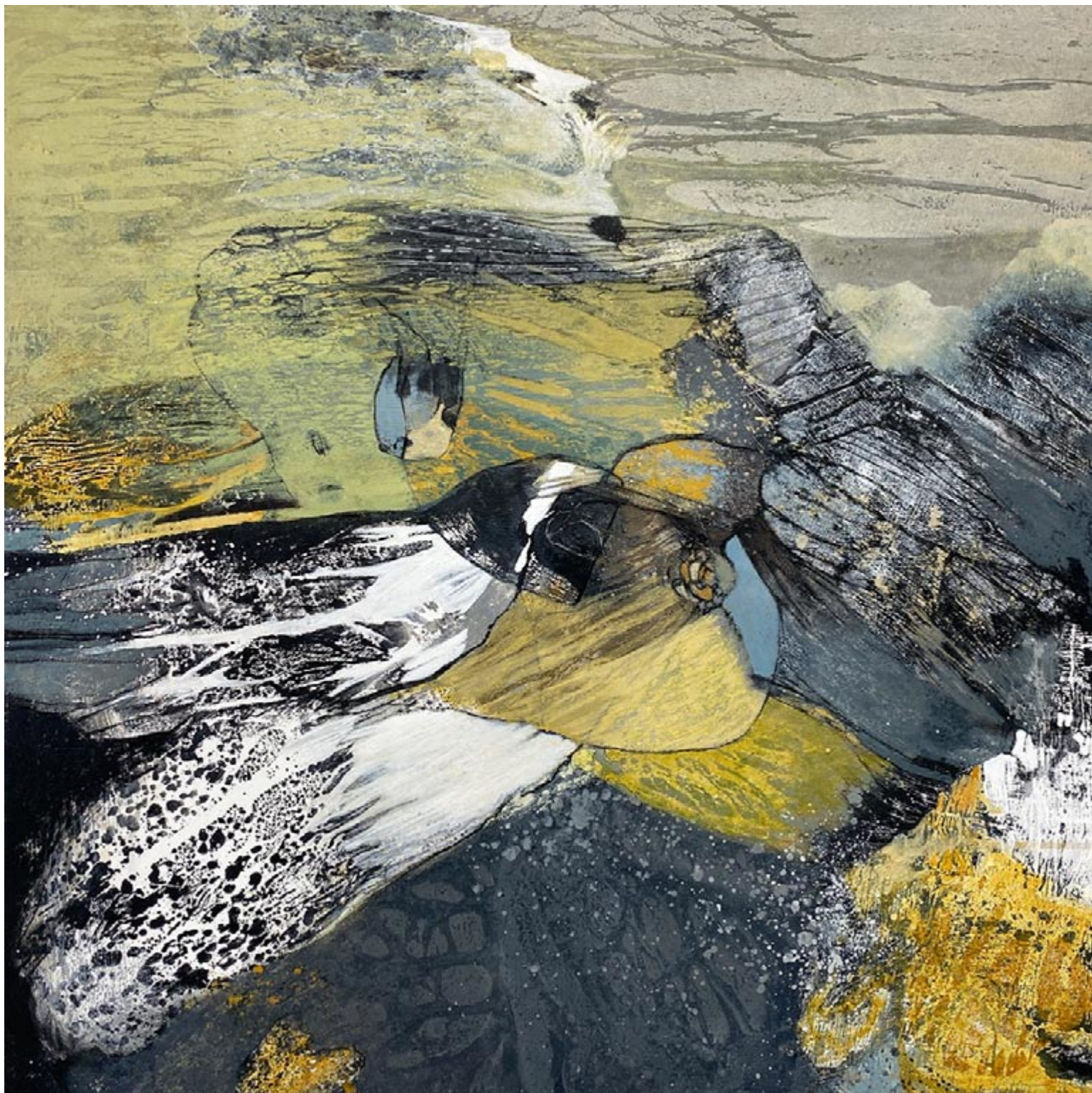
SHAR COULSON

*RHYTHMIC REFLECTIONS
PURSUIT OF NATURE'S PULSING HEART*

NOVEMBER 2022



FOSTER/WHITE GALLERY



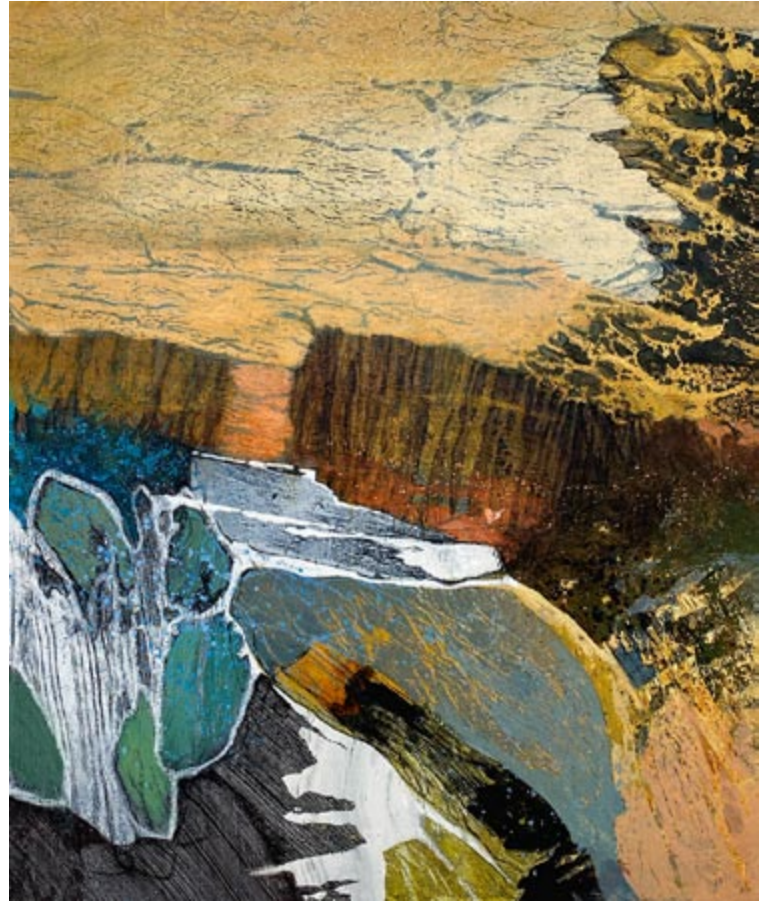
Above: Shar Coulson
Fauna Flora Figure 183
mixed media on linen
30 x 30 inches

Cover image:
Fauna Flora Figure 208
mixed media on linen
40 x 40 inches



"I think of each painting as a visual poem, inspired by the space between the wind and the water, the fauna and the flora. When the color, texture and gestural shape-matter come together harmoniously, the painting becomes itself."

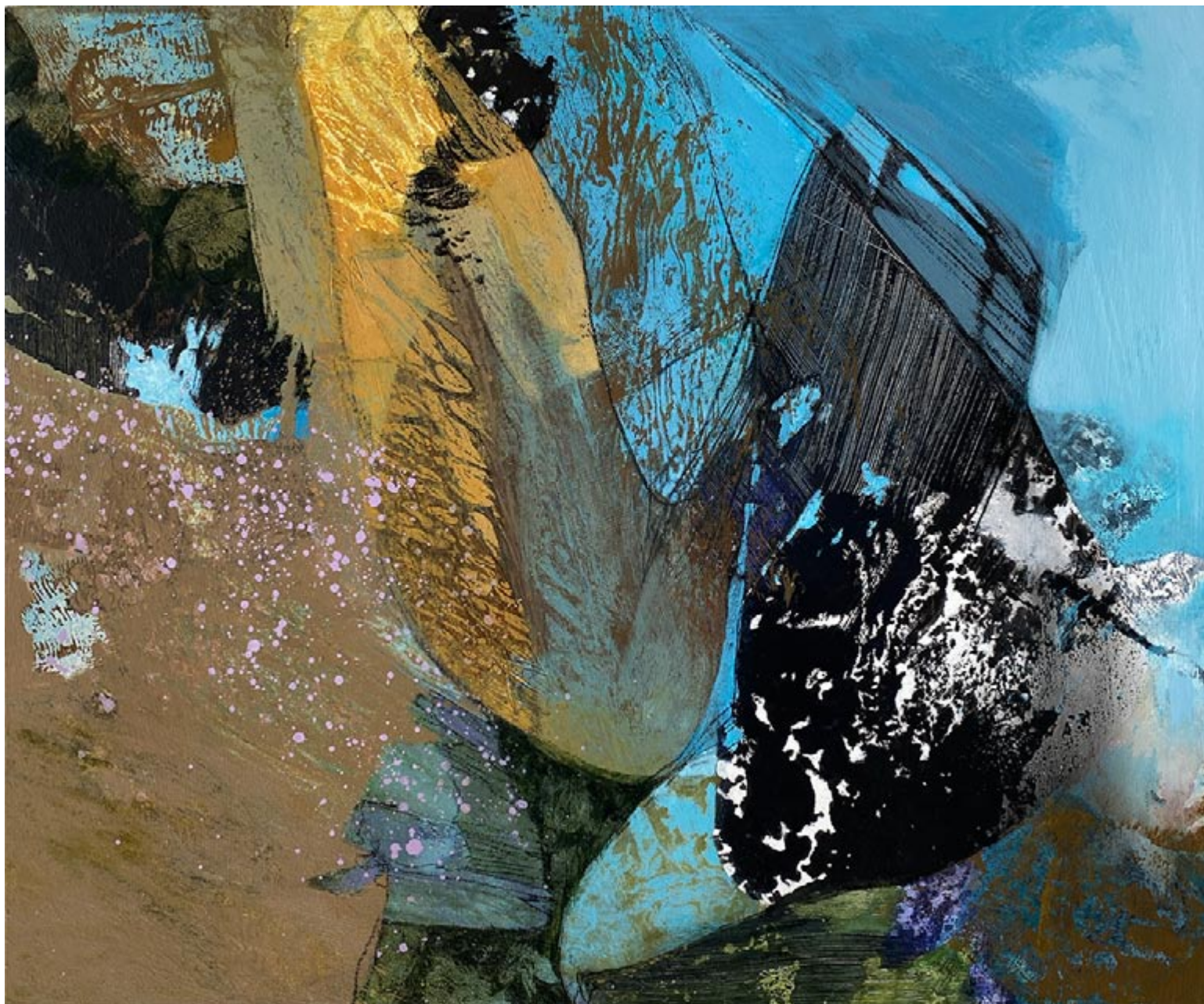
Shar Coulson
Fauna Flora Figure 184
mixed media on panel
24 x 24 inches



In my mind...

*Sapphire birdsongs ride a golden wind.
Translucent layers of morning mist condense and drift,
descending slowly to quench a thirst.
Earth perpetually rebirths -
releasing, resting, reclaiming.
These rhythmic gestures ground and unite.
Born of a single heart aligned with a plural realm.*

Shar Coulson
Fauna Flora Figure 205 and 207
mixed media on panel
24 x 20 inches each



In my process...

Each endeavor is a free-flowing exploration; where the abstract touches the familiar—and something definite is created but its mystery is still intact. In the beginning, each painting is abstract in all aspects. It is throughout the paint application that figuration appears and disappears. Periodically, I will define an organic shape pushing it forward to a place of familiarity. One viewer may see plant-like forms, animals, figures or landscape, but others only textured abstract shapes and patterns bathed in lush earth tones.

Shar Coulson
Fauna Flora Figure 206
mixed media on panel
20 x 24 inches



Shar Coulson
Fauna Flora Figure 222
mixed media on linen
36 x 36 inches



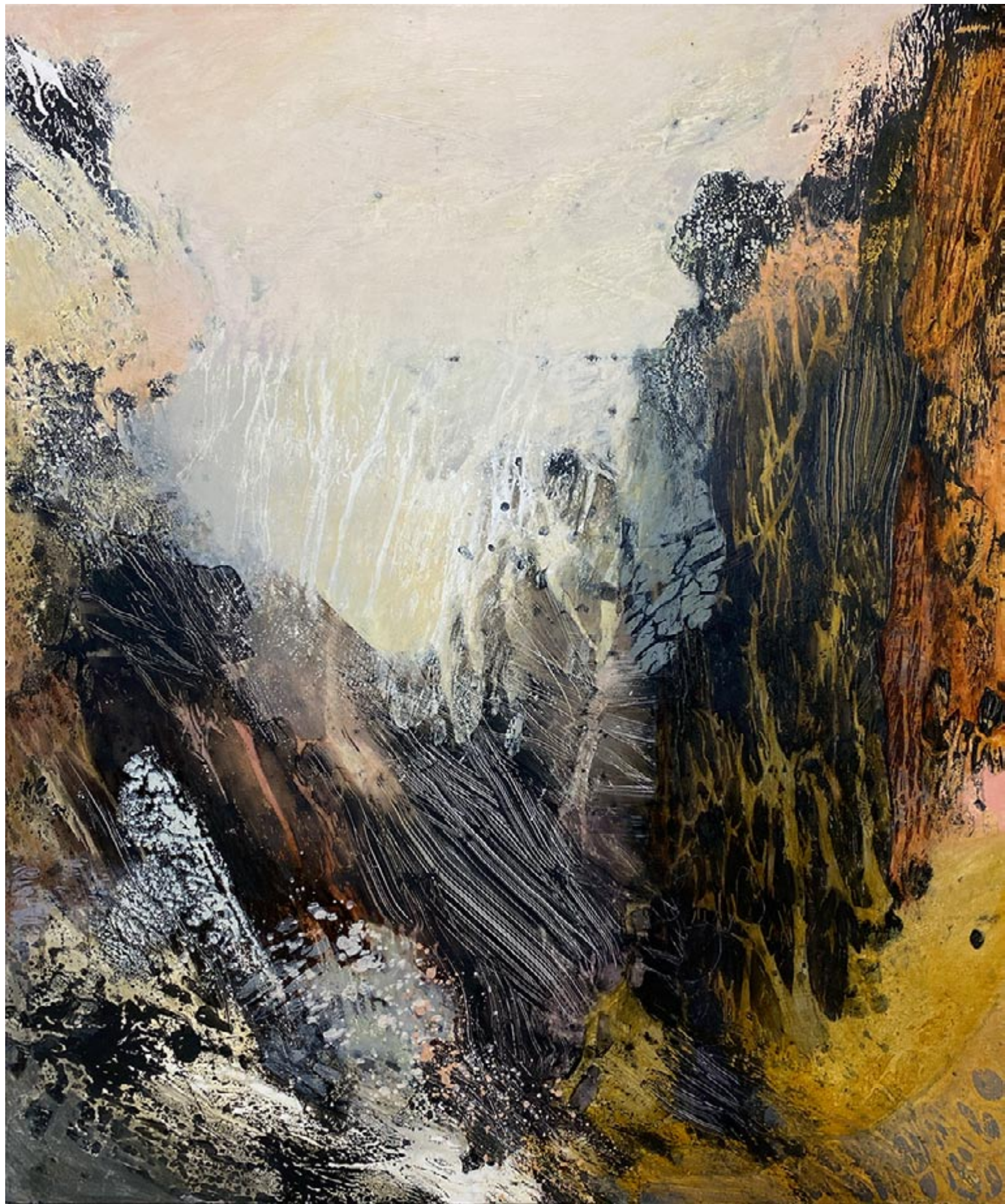
Shar Coulson
Fauna Flora Figure 209
mixed media on linen
40 x 40 inches



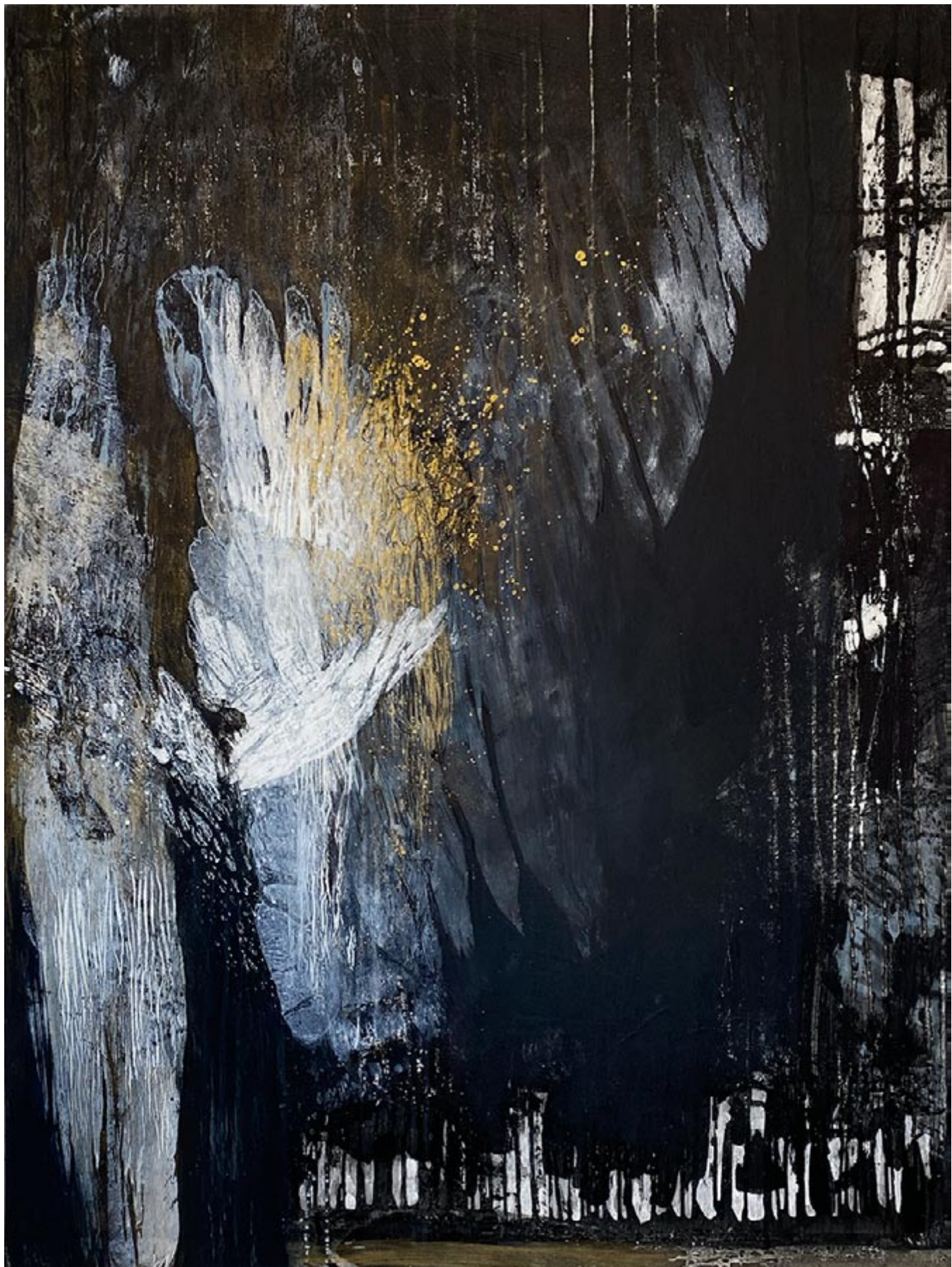
In my work...

Nature is my endless source of inspiration. Its beauty is boundless — lush, enchanting, sun drenched, vast...it is alive, always flowing, never static. I strive to balance its energy and soothing calm with the intuitive power and sensitivity of my heart. Equally powerful, one does not lead the other in the process of making. Leaving little room for my mind to take the lead.

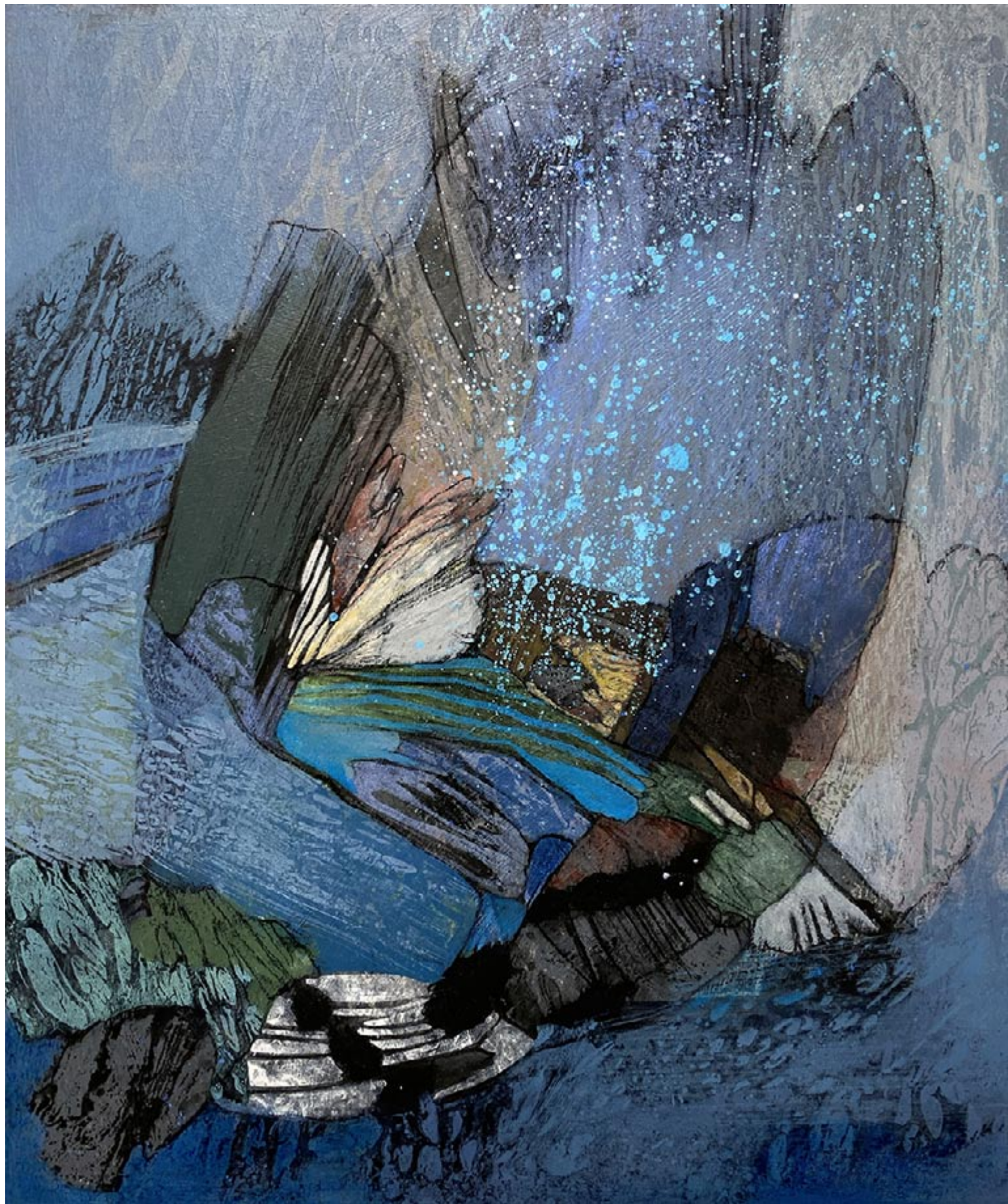
Shar Coulson
Fauna Flora Figure 210
mixed media on linen
36 x 48 inches



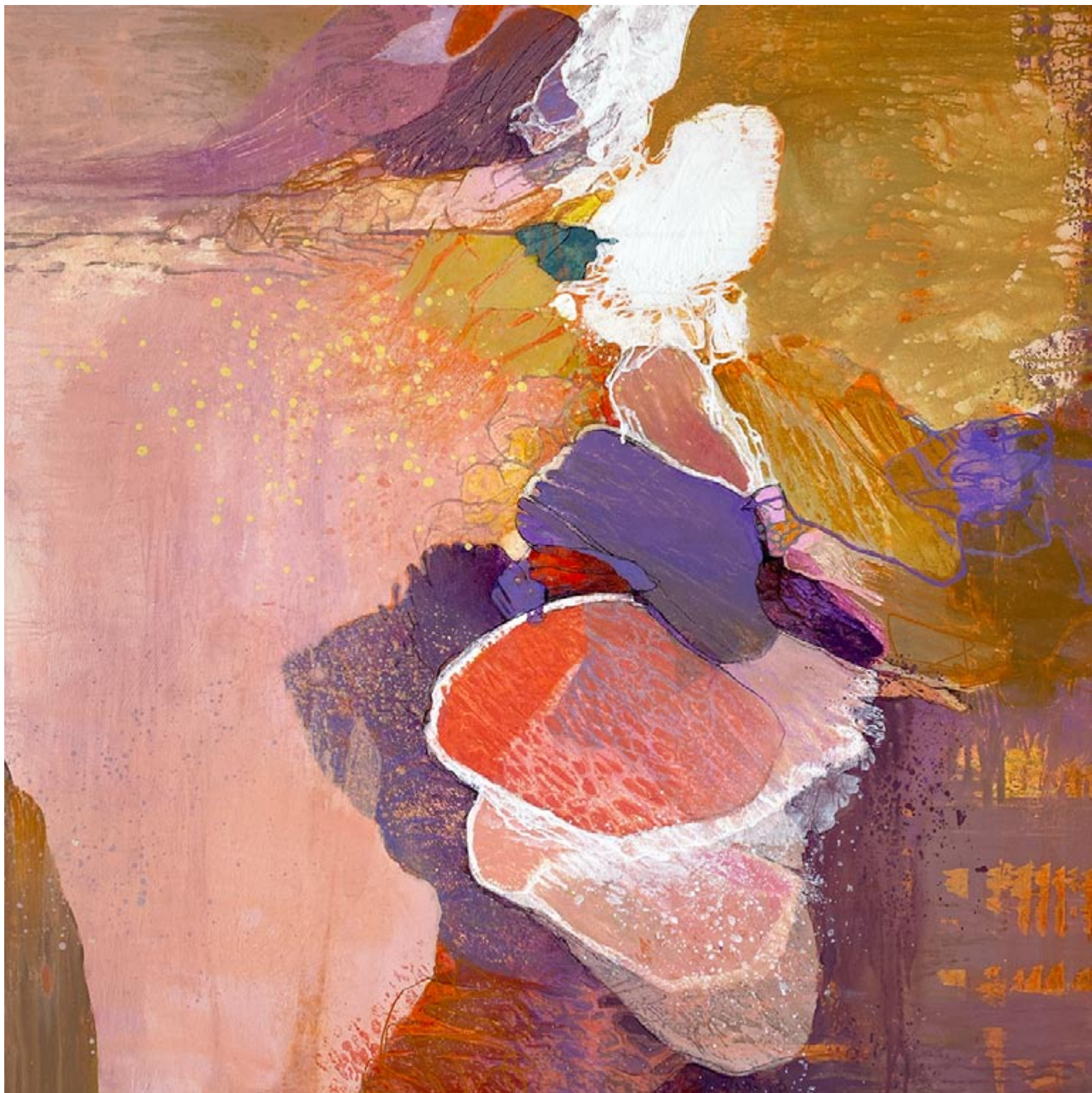
Shar Coulson
Fauna Flora Figure 203
mixed media on linen
48 x 40 inches



Shar Coulson
Fauna Flora Figure 226
mixed media on linen
48 x 36 inches



Shar Coulson
Fauna Flora Figure 204
mixed media on panel
24 x 20 inches

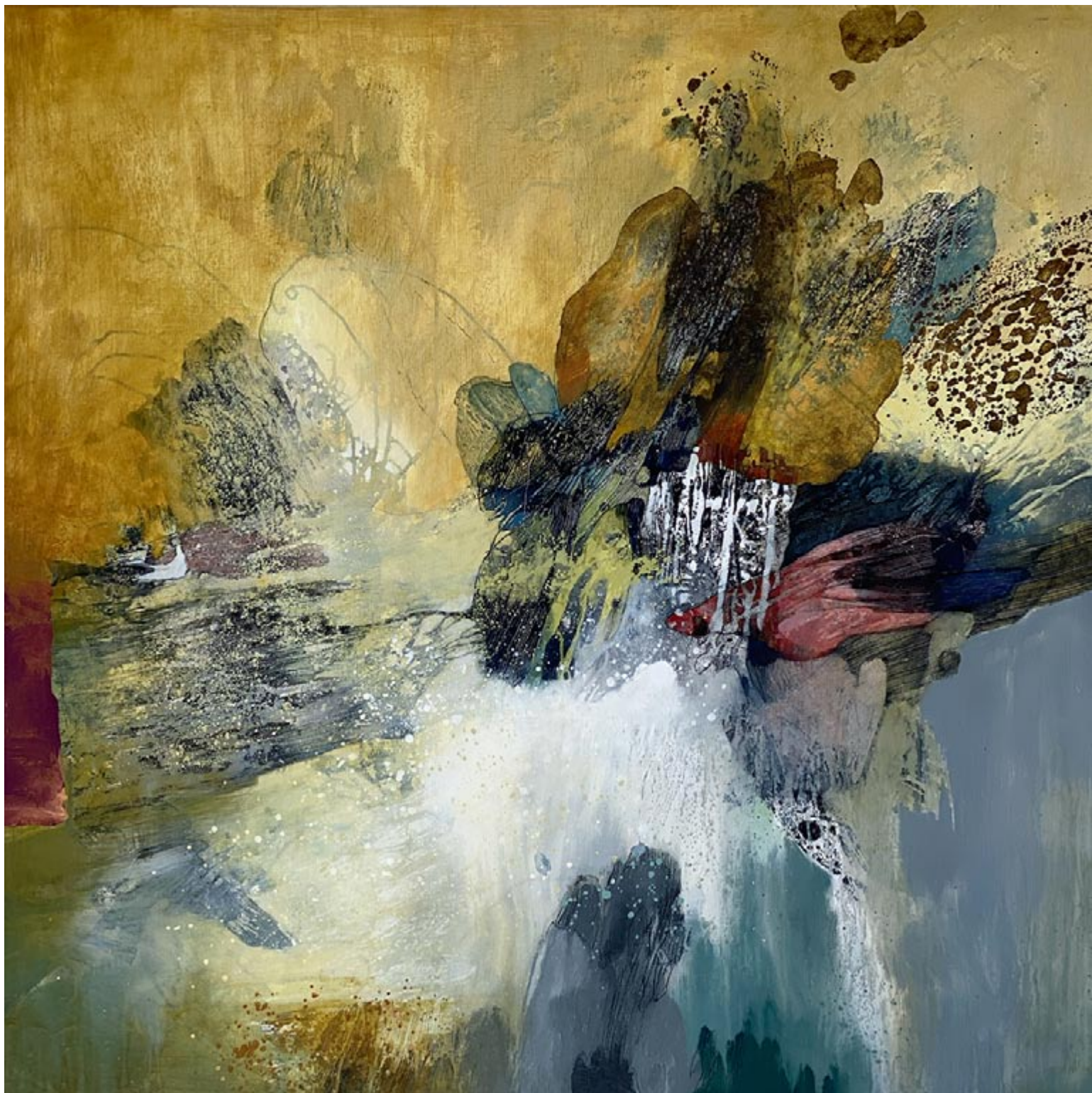


Shar Coulson
Fauna Flora Figure 211
mixed media on linen
40 x 40 inches



"I try not to capture what I see in nature, but to be inspired by it."

Shar Coulson
Fauna Flora Figure 214
mixed media on linen
54 x 54 inches



Shar Coulson
Fauna Flora Figure 217
mixed media on linen
54 x 54 inches



Shar Coulson
Fauna Flora Figure 215
mixed media on linen
48 x 40 inches



Shar Coulson
Fauna Flora Figure 223
mixed media on linen
60 x 60 inches



Shar Coulson
Fauna Flora Figure 224
mixed media on linen
60 x 60 inches



Shar Coulson
Fauna Flora Figure 225 (detail image underneath)
mixed media on linen
50 x 120 inches (Triptych)



Shar Coulson
Fauna Flora Figure 212
mixed media on linen
40 x 52 inches



Shar Coulson
Night Sight 23

Wax based & chalk pastel pencils and acrylic on Canson paper
9 x 9 inches (18 x 18 inches framed)



Shar Coulson
Night Sight 29

Wax based & chalk pastel pencils and acrylic on Canson paper
9 x 9 inches (18 x18 inches framed)



NIGHT SIGHT | Mind's eye illumination through an unforeseen darkness

This body of work was influenced by a very vivid, very compelling series of visions I encountered as an after-effect of an abrupt, game-changing health event I experienced. These visions were a startling gift of beauty in a disorienting time and thus inspired the Night Sight Series. For weeks and months the memory of these visions flowed effortlessly from mind to paper. The kaleidoscope of dancing shapes with vivid colors performed for my audience of one will forever represent a turning point in my art and my life. I soon found out that 'Closed-eye Visualizations' are a form of temporary pseudo-hallucination that can transform thoughts into crystallized, illuminated color images against an intense flat blackness. Once they started I immediately wondered if I could influence them, if I could consciously direct them. I continued these excursions with my eyes closed and a request to fly through a lush forest alive with fauna and flora...and so I did. And for two days I guided and reveled in these amazing performances. On the third day they were gone. What remains is the memory of vivid intensity imprinted in my mind's eye.

Shar Coulson

Night Sight 31

Wax based & chalk pastel pencils and acrylic on Canson paper

9 x 9 inches (18 x18 inches framed)



Shar Coulson
Night Sight 33

Wax based & chalk pastel pencils and acrylic on Canson paper
9 x 9 inches (18 x18 inches framed)

SHAR COULSON

Education

School of Representational Art, Chicago, IL

American Academy of Art, Chicago, IL

Koh-Varilla Guild, Chicago, IL

Independent Study with Judy Pfaff, George Sotos, and Patrick Betaudier

Selected Exhibitions

- | | |
|------|--|
| 2022 | 'Rhythmic Reflections: Pursuit of Nature's Pulsing Heart,' Foster/White Gallery, Seattle, WA
'Foraging,' Beach Museum of Art, Manhattan, KS
'Expressive Exuberance,' Evanston Art Center, Evanston, IL
'Unearthing Layers,' 2-person Show, Nüart Gallery, Santa Fe, NM |
| 2021 | 'Elements: Fire,' Foster/White Gallery, Seattle, WA |
| 2020 | Door County Plein Air Event, (also 2019, 2018), Door County, WI
'Reflection,' Water Street Gallery, Douglas, MI
'The Hardy Gallery 58th Annual Juried Exhibit,' Ephraim, WI
'Between the Known and the Unknown,' Nüart Gallery, Santa Fe, NM |
| 2019 | 'Abstractions,' Group Exhibition 2019, 2018, Nüart Gallery, Santa Fe, NM
'Paint Grand Traverse,' Plein Air Competition, Traverse City, MI
'Along the Line,' Water Street Gallery, Douglas, MI |
| 2018 | Featured Work by Shar Coulson, James May Gallery, Algoma, WI
'Perception vs. Reality,' A Proof Gallery, Washington, DC
'Patterns of Nature,' Bridgeport Art Center, Chicago, IL
'Surfaces,' The Hardy Gallery, Ephraim, WI
'Birds of a Feather,' Water Street Gallery, Douglas, MI
'Fragmented,' ArtSpace 8, Chicago, IL
6th Annual Competition, Bridgeport Art Center, Chicago, IL
'Radical Invention,' Chicago At Source, Chicago, IL |
| 2017 | Winter Salon, Chicago Art Source, Chicago, IL
'Organic Expressionism,' Cultivate, Evanston, IL
'Paint the Town – Plein Air Competition,' Northbrook, IL
Jefferson Plein Air Competition, Jefferson, WI
'Vitality,' Water Street Gallery, Douglas, MI
'The Essence of Organic Abstraction,' A Proof Gallery, Washington, DC
'New Horizons,' Chicago At Source, Chicago, IL |
| 2016 | 'Fauna Flora Figure,' The Union League Club, Chicago, IL
'Puzzle Abstract Exhibit,' Water Street Gallery, Douglas, MI
'Summer Solstices,' ArtSpace 8, Chicago, IL
Cedarburg Plein Air Competition, (Also in 2015, 2013, 2012) Cedarburg, WI
'Chess,' Water Street Gallery, Chicago, IL
'Agape,' ArtSpace 8, Chicago, IL |
| 2015 | ArtSpace 8 Gallery Group Show, Chicago, IL |
| 2012 | 'Hiding in Clear Sight,' North Shore Art League, Chicago, IL
'Centered States,' South Haven Center for the Arts, South Haven, MI |
| 2011 | Reassembled Group Show, South Shore Arts, Munster, IN
Compilation Group Exhibition, The Art Center, Highland Park, IL |
| 2010 | North Park Art Walk, Chicago, IL |

- 'Shared Visions,' Group Show, The John Almquist Gallery, Chicago, IL
- 'Serves. Beyond Blue,' Brickton Arts Center, Chicago, IL
- 'Improbability,' Chicago, IL
- 2009 'Kunst10dagse: Art Unites,' Bergen, The Netherlands
- 2004 'Objects of Nature,' Helsinki, Fish Creek, WI
- 'Two Schools of Thought,' Felter School, Chicago, IL
- 2002 Group Figurative Show, Aron Packer Gallery, Chicago, IL
- 2001 'Tradition and Innovation,' The Three Arts Club, Chicago, IL
- 2000 Alumni Show, School of Representational Art, Chicago, IL

Publications

- 2020 'Abstract/Experimental Art Prize Winners,' International Artist Magazine, Issue 134, August/September
Maddy Schierl, 'Hardy Gallery's Juried Exhibit Kicks Off Socially Distanced Season,' Door County Pulse, July 30
- 2019 Kelly Kane, 'Pushing Boundaries,' Outdoor Painter Magazine, December 2019/January 2020
- 2018 'Shar Coulson,' Voyager Chicago November 15, 2018
Mark Jenkins, 'In the galleries: In two exhibitions, three painters put aside their brushes,' The Washington Post, Nov. 9, 2018
'Perception vs. Reality,' Wall Street International Magazine, Oct 13, 2018
- 2016 'Featured Artist: Shar Coulson,' Chicago Woman, May 11, 2016

Selected Awards

- 2020 Brush and Palette Award, View Point 52, Cincinnati, OH
Award of Excellence, Door County Plein Air Event, Door County, WI
2nd Place Abstract/Experimental Art Award, International Art Magazine
2nd Place Award, The Hardy Gallery 58th Annual Juried Exhibit, Ephraim, WI
- 2019 Award of Recognition, Paint Grand Traverse, Traverse City, MI
Quick Draw Honorable Mention, Paint Grand Traverse, Traverse City, WI
- 2018 People's Choice Award, The Hardy Gallery, Ephraim, WI
Judge's Choice Award, Door County Plein Air Event, Door County, WI
"Best of Show" 6th Annual Art Competition, Bridgeport Art Center, Chicago, IL
- 2017 1st Place Quick Draw Paint and 2nd Place Main Event, Paint the Town – Plein Aire Competition, Northbrook, IL

FOSTER/WHITE GALLERY

220 Third Avenue South #100, Seattle, Washington 98104
www.fosterwhite.com 206.622.2833 seattle@fosterwhite.com
 Copyright © 2022 Foster/White Gallery