



JAMES MARTIN

*JOURNEY ENCOUNTER
WITH DAY GLO*

EXHIBITION JAN 8 - 31, 2015

OPENING RECEPTION
JANUARY 8, 6 - 8 PM

JAMES MARTIN

Pacific Northwest artist, James Martin, welcomes in the New Year with his uproarious sense of humor and unbridled imagination. The small works on brown paper evoke frivolity while commenting on current events and notable figures. His upcoming January exhibition features new paintings inhabited by a familiar cast of characters and Martin's characteristic style of gouache paint fluidly applied to paper. Potatoes, escapades, and partial mermaid nudity will ensue.

Martin is a beloved artist with roots in Seattle and a national fan base. James Martin received his B.A. in creative writing from University of Washington and first exhibited his paintings in 1955.

In 2001, Sheila Farr published a monograph, "James Martin: Art Rustler at the Rivoli", presenting over four decades of Martin's amazing career. A decade later, he is still at it!

Cover: *Day Glo with Evocative Dissimilars*, 2014, gouache on paper, 13.5 x 19.5 in.

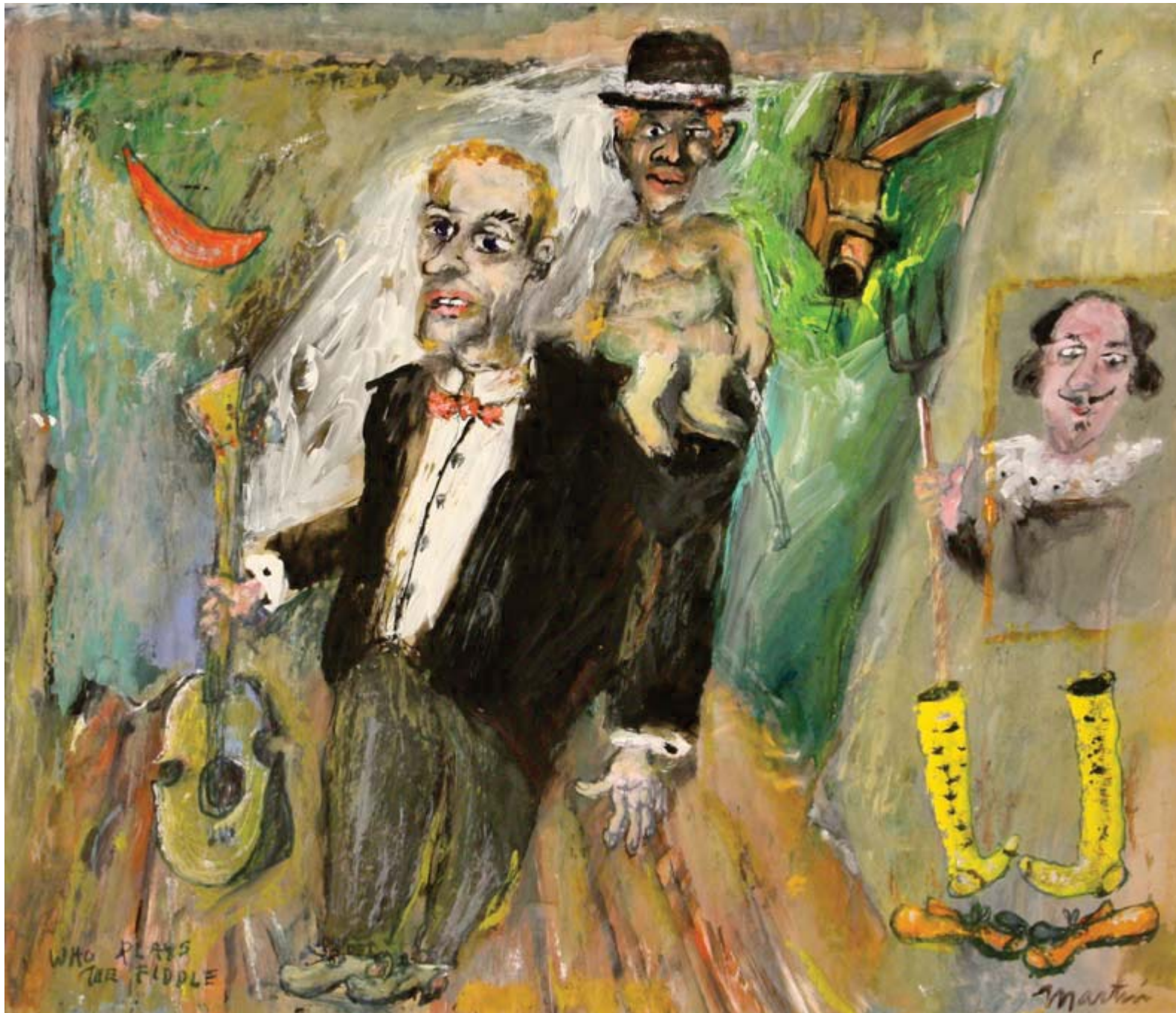


Fishing Partner, 2014, gouache on paper, 16 x 14 in.

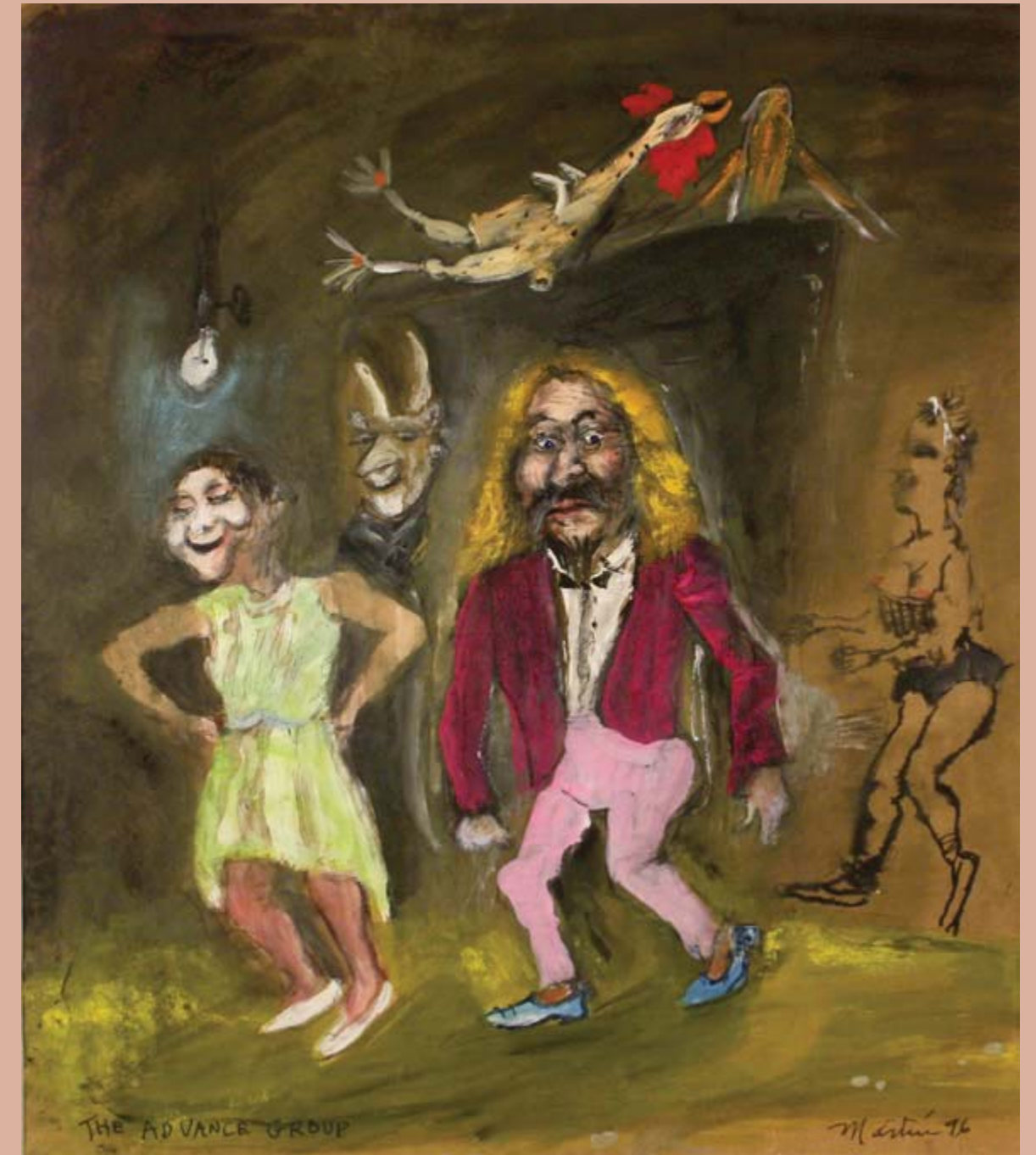
www.fosterwhite.com



Day Glo Road Sign, 2014, gouache on paper, 13 x 19.5 in.



Who Plays the Fiddle, 2014, gouache on paper, 14 x 16 inches



The Advance Group, 2014, gouache on paper, 17.5 x 15 in.



The Illusionist,
2014,
gouache on paper,
13.75 x 19.5 in.

www.fosterwhite.com



Talking Violin, 2014, gouache on paper, 13 x 21 in.



Finding Einstein, 2014, gouache on paper, 19 x 13 in.



Shadow on the Wall, 1996-2014, gouache on paper, 15.25 x 19.5 inches



Rollerskates, 2009-2014, gouache on paper, 17 x 14.5 inches



Rabbit Two, 2014, gouache on paper, 12 x 19.5 in.



Paper Rabbits, 2014, gouache on paper, 17.5 x 19.5 in.



Medieval Garden, Shoes, Violin Talks, 2014, gouache on paper, 16.5 x 19.5 in.



Limo, 2001-2014, gouache on paper, 11.5 x 19 in.



Licensed Whirligig, School Bus in Bottle, 2008-2014, gouache on paper, 117.25 x 19.5 in.



King with Signs of Change, 2014, gouache on paper, 16.75 x 19.5 in.



He Doesn't Like Rabbits, 2014, gouache on paper, 15.5 x 20.5 in.



Fish Bowl, 1996-2014, gouache on paper, 16 x 19 in.



Helen's Santana,
1996-2014,
gouache on paper,
16 x 22.75 in.





Extra Parts & One Shoe, 2014, gouache on paper, 14 x 19.5 in.



Babe, 2000-2014, gouache on paper, 19.5 x 15 in.



End of Season, 2014, gouache on paper, 10.5 x 19.5 in.



Vase with Flowers,
2014,
gouache on paper,
18 x 9 in.

www.fosterwhite.com



Dark Mirror, Joyce on Stilts, Bloomsday, 2014, gouache on paper, 12.5 x 15.5 in.



Broken Mirror and Lace Collar, 2014, gouache on paper, 12 x 20 in.



Talking Violin Beach Scenes, 2014, gouache on paper, 15 x 19.5 in.



The Pilot, 1989-2014, gouache on paper, 17.5 x 27.5 in.

JAMES MARTIN

Education B.A., Creative Writing, University of Washington, Seattle

Selected Exhibitions

- 2015 “Journey Encounter with Day Glo”, Foster/White Gallery, Seattle, WA
- 2014 “Everyone with Violins on the Roof”, Foster/White Gallery, Seattle, WA
- 2013 “Whole Cloth and Mirror”, Foster/White Gallery, Seattle, WA
- 2012 Edmonds Library, Edmonds, WA
 “Poke-In-The-Eye”, Foster/White Gallery, Seattle, WA
- 2011 “Strawberry Series,” Foster/White Gallery, Seattle, WA
- 2010 “Guy Anderson and Other Friends: The Paul I. Gingrich, Jr. Collection,” MONA, La Conner, WA
 “Olive Branch,” Foster/White Gallery, Seattle, WA
 “Shorty’s Black Dress,” Foster/White Gallery, Seattle WA
- 2009 “It’s Only Paint Mrs. Rembrandt,” Foster/White Gallery, Seattle, WA
- 2008 “Is There Life After Crayolas?” Foster/White Gallery, Seattle, WA
 “No Joke: Selections from the Pruzan Collection,” Museum of Northwest Art, La Conner, WA
 “Century 21, Dealer’s Choice,” Wright Exhibition Space, Seattle, WA, curated by Seattle Art Dealers

Association members.

- 2007 “No Woolly Mammoths Here,” Foster/White Gallery, Seattle, WA
- 2006 “Crime & Punishment,” Bau-Xi Gallery Toronto, ON
- 2005 ’05 “The Continental,” Foster/White Gallery, Seattle, WA
 “Souvenirs,” Foster/White Gallery, Seattle, WA, group
- 2004 “Searching for the Perfect Vehicle?” Foster/White Gallery, Seattle, WA
- 2003 “Paintings,” Edmonds City Hall, Edmonds, WA, two person with Joyeanna Chaudiere
- 2000 Museum of Northwest Art, La Conner, WA, group
- 1999 Foster/White Gallery, Kirkland, WA, solo
- 1998 “From the Duck Farm,” Foster/White Gallery, Seattle, WA, solo
- 1996 “New Paintings,” Foster/White Gallery, Seattle, WA, group
 “Advance Work,” Foster/White Gallery, Kirkland, WA, solo
- 1995 Foster/White Gallery, Kirkland, WA, group

- Bellevue Art Museum, Bellevue, WA
- Pulliam Deffenbaugh Nugent Gallery, Portland, OR, solo
- 1994 “Glories of the Game: The Art of Baseball,” SAFECO, group
 “Recent Paintings & Drawings,” Foster/White Gallery, Kirkland, WA
- 1993 Foster/White Gallery, Seattle, WA, group
 Pulliam Deffenbaugh Nugent Gallery, Portland, OR, solo
- 1992 “Recent Paintings,” Foster/White Gallery, Seattle, WA, solo
- 1991 Foster/White Gallery, Seattle, WA, group
- 1990 Pulliam/Nugent Gallery, Portland, OR, solo
- 1989 Foster/White Gallery at Frederick & Nelson, Seattle, WA solo
- 1988 “Through The Looking Glass,” Bellevue Art Museum, Bellevue, WA
- 1987 Foster/White Gallery at Frederick & Nelson, Seattle, WA, solo
 “Fur, Feathers and Scales: Especially For Children,” Bellevue Art Museum, Bellevue, WA
- 1986 “Martin Tour Collection: The Art of St. Martin’s Abbey,” Tacoma Art Museum, Tacoma, WA
- 1985 Woodside/Braseth Gallery, Seattle, WA, solo
 Fountain Gallery, Portland, OR, group
- 1983 Woodside/Braseth Gallery, Seattle, WA, group
- 1982 Fountain Gallery, Portland, OR, solo
 Woodside/Braseth Gallery, Seattle, WA, solo
 Fountain Gallery, Portland, OR, group
- 1971 Gordon Woodside Gallery, Seattle, WA, solo
- 1970 Gordon Woodside Gallery, Seattle, WA, solo
 Fountain Gallery, Portland, OR, group
- 1969 James Martin Showcase, Edmonds, WA
- 1968 Seattle Art Museum, 28th Annual Exhibition of NW Watercolors, Seattle, WA
- 1967 Summer Salon, Henry Art Gallery, Seattle, WA
- 1966 Otto Seligman Gallery, Seattle, WA
- 1965 Otto Seligman Gallery, Seattle, WA, two person with Polly Rawn
 Seattle Art Museum, 51st Annual Exhibition of NW Artists, Seattle, WA
- 1964 Fountain Gallery, Portland, OR, solo
 Seattle Art Museum, 50th Annual Exhibition of NW Artists, Seattle, WA
- 1963 Younger Washington Artists, Henry Art Gallery, Seattle, WA
- 1962 Otto Seligman Gallery, Seattle, WA, solo
 Otto Seligman Gallery, Seattle, WA, two person with Herbert Scribner
- 1961 Seattle Art Museum, 47th Annual Exhibition of NW Artists, Seattle, WA
 Seattle Art Museum, 21st Annual Exhibition of Watercolors, Seattle, WA
- 1958 Seattle Art Museum, 44th Annual Exhibition of NW Artists, Seattle, WA

Otto Seligman Gallery, Seattle, WA, two person with Virginia Kobler
1955 Louise Gilbert Little Gallery, Frederick & Nelson, Seattle, WA
Seattle Art Museum, 41st Annual Exhibition of NW Artists, Seattle, WA

Selected Publications

Brotman, Eric. "The Mystery of 309 Main Street." Edmonds Beacon, April 8, 2010
Upchurch, Michael. "Like 'Tetrasomy Two,' skeels was a true original." Seattle Times, December 16, 2007.
Jacobson, Lynn. "SW This Week." Seattle Weekly January 4-10, 2006: 31.
Out of the Dust. Edmonds: Edmonds Arts Festival, 2005.
Kangas, Matthew. "Artists show folk sensibility." Seattle Times January 21, 2005: 43H.
Farr, Sheila. "Layered meanings come standard with James Martin's 'Perfect Vehicle'." Seattle Times February 20, 2004.
Johnson, Barry. "The James Martin treatment." Booksweek March 18, 2001: E12.
"An ephemeral service with lasting impact." Union Record 2001.
25th Anniversary Exhibit. Portland, Oregon: Fountain Gallery of Art, 1986.
Tarzan, Delores. "Fine Paintings at Four Galleries." Seattle Times March 4, 1975: C4..
Gregory, Anne. "Unusual World of James Martin Shown." The Enterprise October 30, 1968: 1-6.
Duncan, Don. "Jim Martin: A Man and His Paintings." Seattle Times October 1, 1968: 12.
Batie, Jean. "Martin's Lions in Plain Brown Wrappers." Seattle Times 1968.
Batie, Jean. "Something with Six Toes Is Afoot." Seattle Times September 1, 1967: 24.
Faber, Ann. "Martin Show at Seligman." Seattle Times October 14, 1966..
Northwest Artists of the Otto Seligman Gallery. Seattle: Otto Seligman Gallery, 1962.
Lehmann, Thelma. "Pizzuto Paintings Mixed in Quality." Seattle Post-Intelligencer date unknown.
Callahan, Kenneth. "Martin Drawings," Seattle Times January 12, 1958.

Complete Resume Available Upon Request

FOSTER/WHITE GALLERY

220 THIRD AVENUE SOUTH, SEATTLE WA 98104
TELEPHONE : 206.622.2833 SEATTLE@FOSTERWHITE.COM
WWW.FOSTERWHITE.COM

Copyright © 2014 Foster/White Gallery