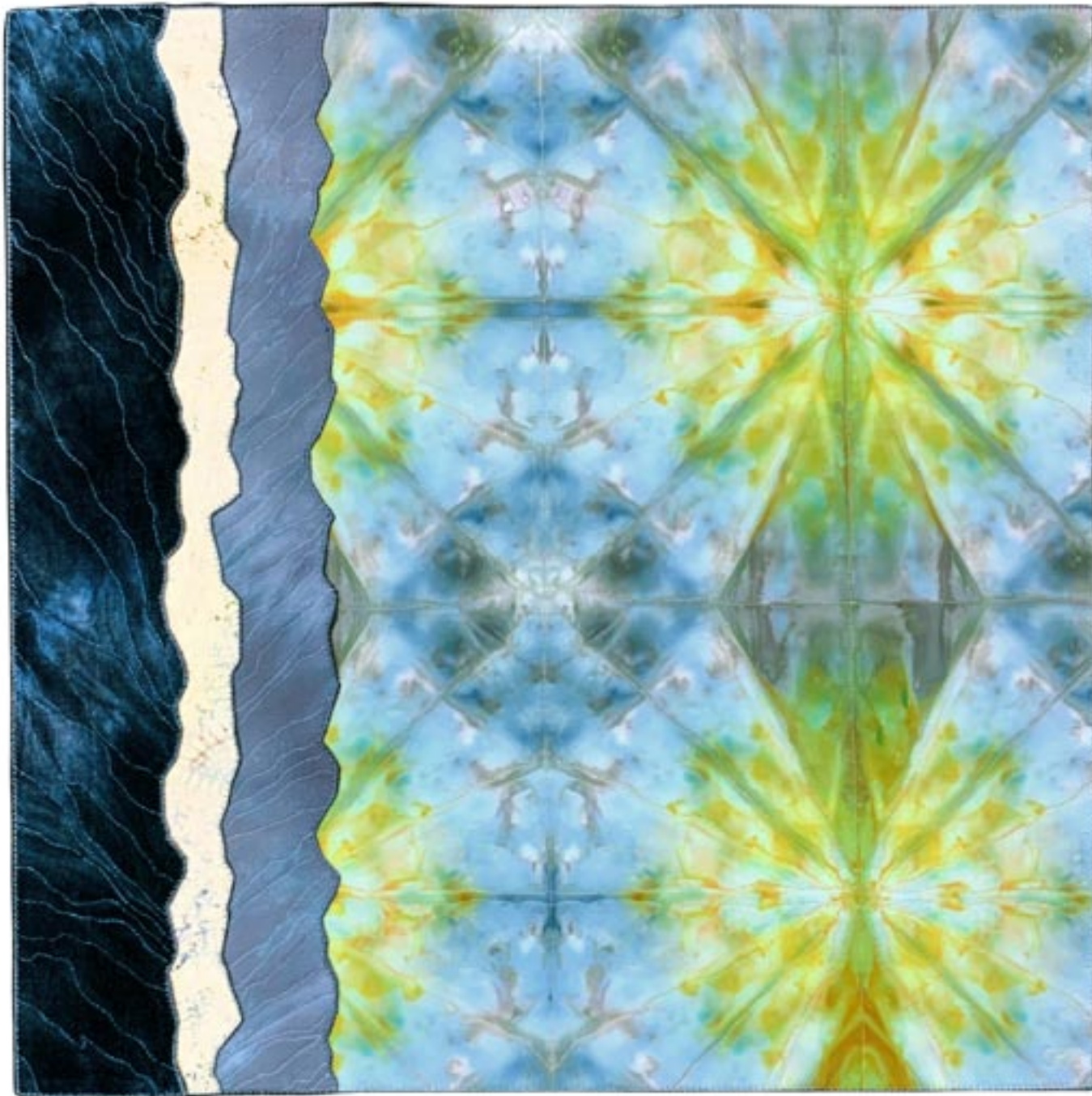


CAMERON ANNE MASON  
*CONVERGENT PATHS*

*JUNE 2022*



FOSTER/WHITE GALLERY



*Autumn Bamboo*

18 X 18 inches

Materials: silks, rayon/silk velvet, wool yarn, non-woven interfacing, rayon and polyester threads on wood panel. Surface design techniques: monotype, paste resist, arashi and clamp shibori, low-water immersion dyeing.

Cover page: *Speaks Volumes*, 25 x 25 inches

Materials: silk, rayon/silk velvet, cotton, wool yarn, non-woven interfacing, rayon, cotton and polyester threads on wood panel. Surface design techniques: ice dyeing, monotype, low-water immersion dyeing.



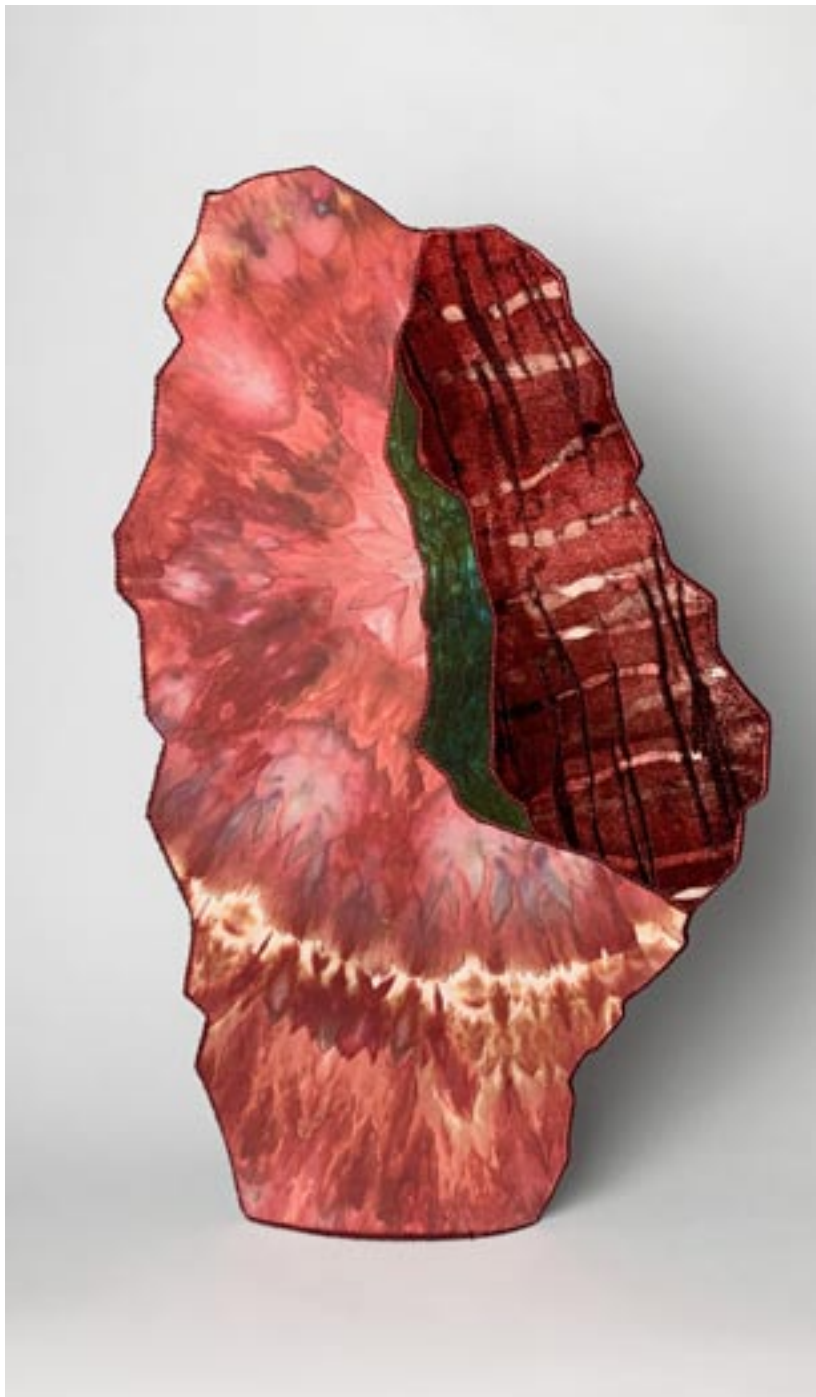


*Bamboo In Late Summer*

18 x 18 inches

Materials: silk/linen double-weave, cotton velveteen, cotton, wool yarn, non-woven interfacing, cotton and polyester threads on wood panel.

Surface design techniques: monotype, paste resist, low-water immersion dyeing.



*Ellinor* (pictured from two sides)

24 x 14.25 x 4 inches

Materials: silk, rayon/silk velvet, cottons, wool yarn, non-woven interfacing, cotton, rayon and polyester threads.

Surface design techniques: paste-resist, ice dyeing, screen printing, low-water immersion dyeing.



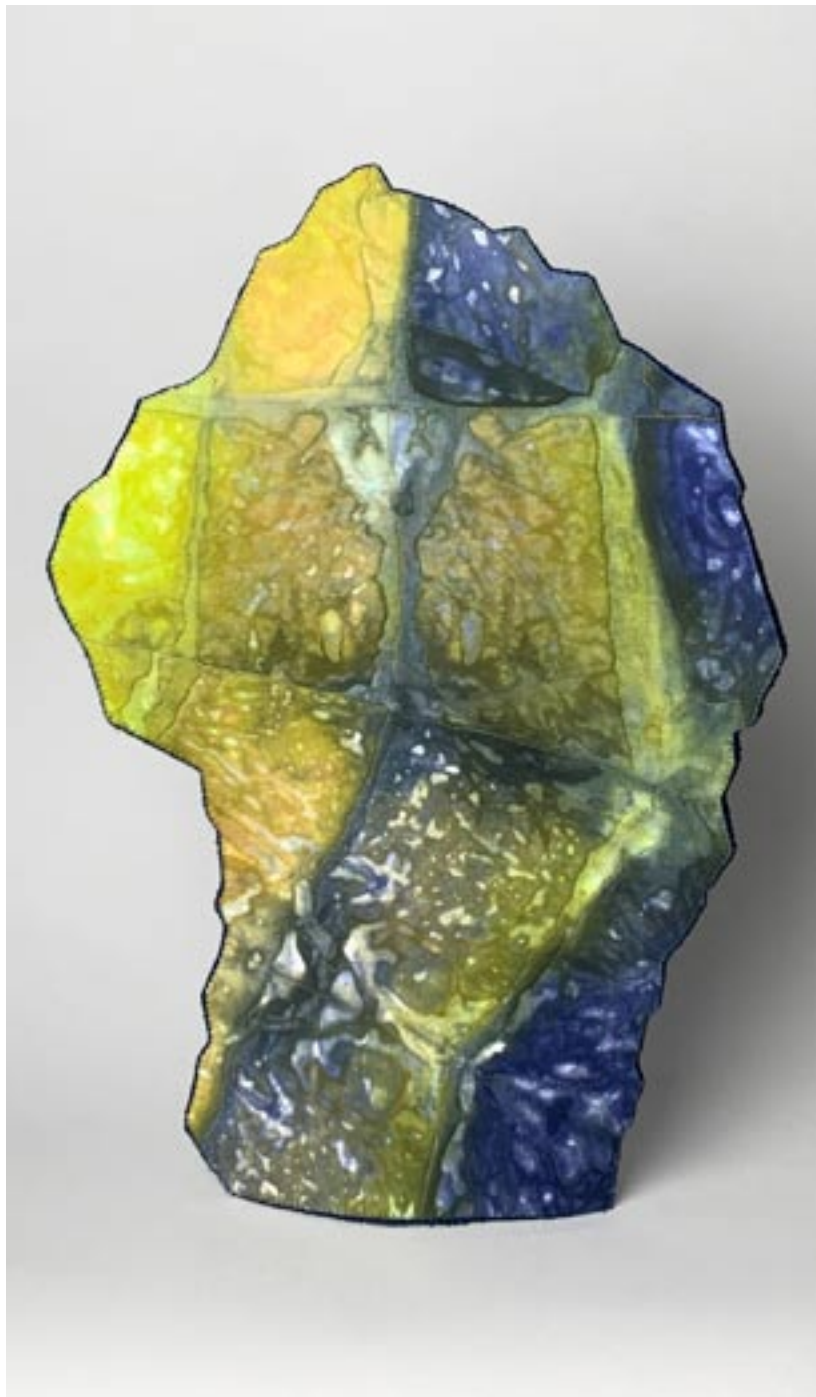


*Tiled Sky*

40 x 16 inches

Materials: cotton, wool yarn,  
non-woven interfacing, cotton  
and polyester threads  
on wood panel.

Surface design techniques: wax  
resist, low-water  
immersion dyeing.



*Bretherton* (pictured from two sides)

20 x 13.5 x 4.5 inches

Materials: silk, cottons, cotton velveteen, wool yarn, non-woven interfacing, cotton, rayon, and polyester threads.

Surface design techniques: monotype, folded, and low-water immersion dyeing.





*Spring Bamboo*

18 x 18 inches

Materials: silk, rayon/silk velvet, cotton, wool yarn, non-woven interfacing, cotton, rayon, and polyester threads on wood panel.

Surface design techniques: monotype, paste resist, low-water immersion dyeing.



*Lena*

26.5 x 13.75 x 3.25 inches

Materials: silk, cottons, rayon/silk velvet, wool yarn, non-woven interfacing, cotton, rayon, and polyester threads.

Surface design techniques: paste-resist, monotype, low-water immersion dyeing.





*Worthington*

34 x 10 x 4 inches

Materials: rayon/silk velvet, rayon, cottons, wool yarn, non-woven interfacing, rayon, cotton, and polyester threads.

Surface design techniques: ice dyeing, color attractant, low-water immersion dyeing.



*Constance*

30.75 x 11.75 x 4.5 inches

Materials: silks, rayon/silk velvet, cotton, wool yarn, non-woven interfacing, cotton, rayon and polyester threads.

Surface design techniques: monotype, arashi shibori, low-water immersion dyeing.





*Foundation Planting*

30 x 18 inches

Materials: silk, rayon/silk velvet, cotton, wool yarn, non-woven interfacing, cotton and polyester threads on wood panel.

Surface design techniques: paste resist, ice dyeing, low-water immersion dyeing.

Cameron Anne Mason



*Pershing*

25.5 x 15 x 4.5 inches

Materials: silk, rayon/silk velvet, cottons, wool yarn, non-woven interfacing, cotton, rayon, and polyester threads.

Surface design techniques: monotype, rust transfer, low-water immersion dyeing.





*Riparian*

30 x 18 inches

Materials: cotton, wool yarn, non-woven interfacing, rayon and polyester threads on wood panel.

Surface design techniques: free-motion embroidery, tree rubbing, color attractant, low-water immersion dyeing.

Cameron Anne Mason



*Buckhorn*

29 x 11.75 x 5 inches

Materials: cottons, rayon/silk velvet, wool yarn, non-woven interfacing, cotton, rayon and polyester threads.  
Surface design techniques: monotype, ice dyeing, low-water immersion dyeing.





*Descending The Ravine*

35 x 24 inches

Materials: rayon/silk velvet, cottons, wool yarn, non-woven interfacing, rayon, cotton and polyester threads on wood panel.

Surface design techniques: monotype, ice dyeing, arashi shibori.

Cameron Anne Mason



*Townsend*

32.25 x 14.5 x 5.5 inches

Materials: rayon, cottons, rayon/silk velvet, silk, wool yarn, non-woven interfacing, rayon and polyester threads.

Surface design techniques: ice dyeing, rust transfer, clamped shibori, paste resist, color attractant, low-water immersion dyeing.





*Hot Spell*

25 x 25 inches

Materials: rayon/silk velvet, cottons, wool yarn, non-woven interfacing, rayon, cotton and polyester threads on wood panel.

Surface design techniques: ice dyeing, rust transfer, color attractant, low-water immersion dyeing.



*Tyler*

23.75 x 10.75 x 5.25 inches

Materials: raw silk, rayon/silk velvet, cottons, wool yarn, non-woven interfacing, cotton, rayon, and polyester threads.

Surface design techniques: ice dyeing, arashi shibori, monotype, low-water immersion dyeing.





*Two Worlds*

40 x 16 inches

Materials: rayon/silk velvet, wool yarn,  
non-woven interfacing, cotton and polyester  
threads on wood panel.

Surface design techniques: paste resist.

Cameron Anne Mason

## CAMERON ANNE MASON

### Education

- 1989 Art Institute of Seattle, Honors in Visual Communications, Seattle, WA
- 1983-85 University of Washington, Liberal Arts study

### Master Classes

- 2010, 2006 Jane Dunnewold, Coupeville Fine Art Center, Coupeville, WA
- 2005 Marita Dingus, Transforming Textiles, Pratt Fine Arts Center, Seattle, WA
- 2004 Pat Oleszko, Inflatables, Fremont Arts Council, Seattle, WA
- 2001-2003 Surface Design Study Group, Weaving Works, Seattle, WA
- 2000 Ali Pretty, Batik and Design for Performance, Fremont Arts Council, Seattle, WA

### Exhibitions

- 2022 'Convergent Paths,' Foster/White Gallery, WA
- 2020 'Home | Land,' Foster/White Gallery, Seattle, WA
- 2019 'Fields,' Foster/White Gallery, Seattle, WA
- 2016 'Bellwether Sculpture Biennial,' Bellevue City Hall, Bellevue, WA
- 'Branching,' Foster/White Gallery, Seattle, WA
- 2014 'Whole Cloth: Soft Sculptures by Larry Calkins and Cameron Anne Mason,' Aljona Thornton Place, Seattle, WA
- 2013 'Madrone,' Foster/White Gallery, Seattle, WA
- 2012 'Surface. Form. Stitch.,' Fairbanks Art Gallery, Oregon State University, Corvallis, OR
- 2011 'Soft Earth,' Foster/White Gallery, Seattle, WA
- 2010 New Artist Introduction, Foster/White Gallery, Seattle, WA
- 2009 West Seattle Art Walk, The Body Bar, Seattle, WA
- 2009 'Earth and Sky,' Phinney Center Gallery, Seattle, WA
- 2008 'Surface Tension,' Greenwood Artwalk, The Fiber Gallery, Seattle, WA
- 2007 Greenwood Artwalk, Allusia, Seattle, WA
- 'postCARDS: 52 weeks, 52 cards,' Bothell Public Library, Bothell, WA

### Installations

- 2018 'Sky Bound,' Burning Man Festival, Black Rock City, NV
- 2014 'Playastan Crossroads,' Burning Man Festival, Black Rock City, NV
- 2013 'Susurrations,' Storefronts Bellevue, Bellevue, WA
- 'Soft Coral,' Bellevue Arts Museum Featured Object, Bellevue, WA
- 2012 'The Orchard Room,' Heaven and Earth IV: Rootbound, Center on Contemporary Art Temporary Installation, Seattle, WA
- 'Fantastic Fibers,' Jurors Choice Recognition, Yeisler Art Center, Paducah, KY
- 'Bellwether Art Walk,' Bellevue, WA
- 2008 Seen/Unseen, STart on Broadway, Sound Transit Temporary Installations, Seattle, WA
- Living Room, Oregon Country Fair, Veneta, OR
- 2007 Nurse Log, Winter Solstice Feast, Seattle, WA
- 2004 The Color Wheel, Winter Solstice Feast, Seattle, WA
- 2003 Lanterns, Winter Solstice Feast, Seattle, WA



## Selected Group Shows

2022	'An Artist's Photographic Eye,' The Lakeshore, Seattle, WA
2020	'Fiber 2020,' Bainbridge Island Museum of Art, Bainbridge Island, WA
2018	'Contemporâneo 2019,' São Paulo & Rio, Brazil
2017	'Fiber Fusion,' Schack Art Center, Everett, WA
2014	'Gea', 'Miniartextile,' Como, Italy
	'Forming,' Alden B. Dow Museum of Science and Art, Midland Center for the Arts, Midland, MI
	'Reaching Beyond: Northwest Designer Craftsman at 60,' Whatcom Museum, Bellingham, WA
	'Bellwether,' Bellevue, WA
2013	'Dancing Surfaces: Surface Design Association,' Washington, Seattle, WA
	Anacortes Arts Festival: Juried Arts at the Port, Anacortes, WA
	Surface Design Association Members Show, San Antonio, TX
	'Salsa: CQA at the Mighty Tieton,' Tieton, WA
	'Fantastic Fibers,' Paducah, KY
2012	'Bellwether: reGeneration,' Bellevue, WA
	'The Softer Side of Death,' Lundgren Monuments, Seattle, WA
	'Preview Exhibition,' Foster/White Gallery, Seattle, WA
	'Freedom to See Ourselves: A Celebration of Culture,' WSU Tri-Cities Art Center, Richland, WA
2011	'Craftforms,' Wayne Art Center, Wayne, PA
	'Set the Table for SAM,' Seattle Art Museum Event, Seattle, WA
	'Easelstan 5 @ 10,' Phinney Center Gallery, Seattle, WA
	Rio Patchwork Design Show, Rio de Janeiro, Brazil
2010	'Olive Branch,' Foster/White Gallery, Seattle, WA
	Bellwether Art Walk, Bellevue, WA
2010	Rio Patchwork Design Show, Rio de Janeiro, Brazil, Audience Choice Award
	Pratt Instructor's Show, Seattle City Hall, Seattle, WA
	'MadArts Redux,' Foster White Gallery, Seattle, WA
	'Fantastic Fibers,' Yeiser Art Center, Paducah, KY
	'Beyond Convention,' Washington State Convention and Trade Center, Seattle, WA
2009	'Soft Forms,' Pratt Gallery at Tashiro Kaplan Studios, Seattle, WA
	'Beyond the Block,' Seattle City Hall, Seattle, WA
2008	'Stitched and Bound,' Sammamish Library, Sammamish, WA
2007	'Evolution of the Art Quilt,' Washington State Historical Museum, Tacoma, WA
2006	'Traditions Transformed,' Textile Center, Minneapolis, MN
	'Uncommon Thread,' Blue Heron Gallery, Vashon Island, WA
	'Ebb & Flow,' Penn Cove Pottery, Coupeville, WA
	'Quilt. Fiber. Art.,' Washington Center for Performing Arts, Olympia, WA
2005	Greenwood ArtWalk, Juror's Top Pick, Seattle, WA
	'Water's Edge,' Seattle Aquarium, Seattle, WA

## Awards

2012	Honorable Mention, Freedom to See Ourselves: A Celebration of Culture
2010	Juror's Choice Award, Fantastic Fibers
	Audience Choice Award, Rio Patchwork Design
2005	Juror's Top Pick, Greenwood Art Walk

## Teaching

- 2005-present Pratt Fine Arts Center, Surface Design instructor, Seattle, WA  
2012 Workshop Instructor, SDA/SAQA Conference, Identity: Context and Reflection, Philadelphia, PA  
Guest Instructor, University of Washington School of Art, Seattle, WA  
2011 Instructor, Made Sewing Studio, Seattle, WA  
2010 Pratt Fine Arts Center, Workshop Instructor, 'Beyond Techniques,' Seattle, WA  
2007-2010 Instructor, Space to Create, Surface Design  
2009 Batik Workshop, Oregon Country Fair, Veneta, OR  
2008 Bellevue Arts Museum, Demonstration of Surface Design technique  
Contemporary Quilt Art Association, Presentation Festival Arts:  
Community, Artistry, Celebration  
Batik Workshop, Seattle Tilth, Seattle, WA  
2002 Giant Puppet Installation and Public Art Booth, Bumbershoot, Seattle, WA  
2001 Giant Puppet Workshop, Salmon Summit, Leavenworth, WA  
2001 Giant Puppet Installation and Public Art Booth, Bumbershoot, Seattle, WA  
2001 Visiting Artist Program Coordinator, Fremont Arts Council, Seattle, WA  
Associations  
2010-present Surface Design Association Seattle  
2009-present Northwest Designer Craftsman  
2006-present Surface Design Association  
2004-present Contemporary Quilt Arts Association, Board positions: Programs co-chair  
2011-12, Arts Liaison 2010, Showcase Chair 2007-2009  
1989-present Fremont Arts Council Member, Secretary 1991-1993, Board Member  
1991-1995

## Bibliography

- 2012 Michael Upchurch, '2 artists let old books tell new stories,' The Seattle Times Weekend Plus,  
July 20, pg. 24

FOSTER/WHITE GALLERY

220 Third Avenue South #100, Seattle, Washington 98104

[www.fosterwhite.com](http://www.fosterwhite.com)