

CAMERON ANNE MASON

HOME/LAND

DECEMBER 2020



FOSTER/WHITE GALLERY



Bramble

16.5 X 16.5 inches

Materials: silk, wool yarn, non-woven interfacing, rayon and polyester threads on wood panel
Surface design techniques: free-motion embroidery and monotype

Cover page: *Understory*, 26 x 26 inches,

Materials: raw silk, rayon-silk velvet, cotton, wool yarn, non-woven interfacing,
cotton, rayon and polyester threads on wood panel

Surface design techniques: free-motion embroidery, monotype, wax resist,
low-water immersion dyeing

Cameron Anne Mason

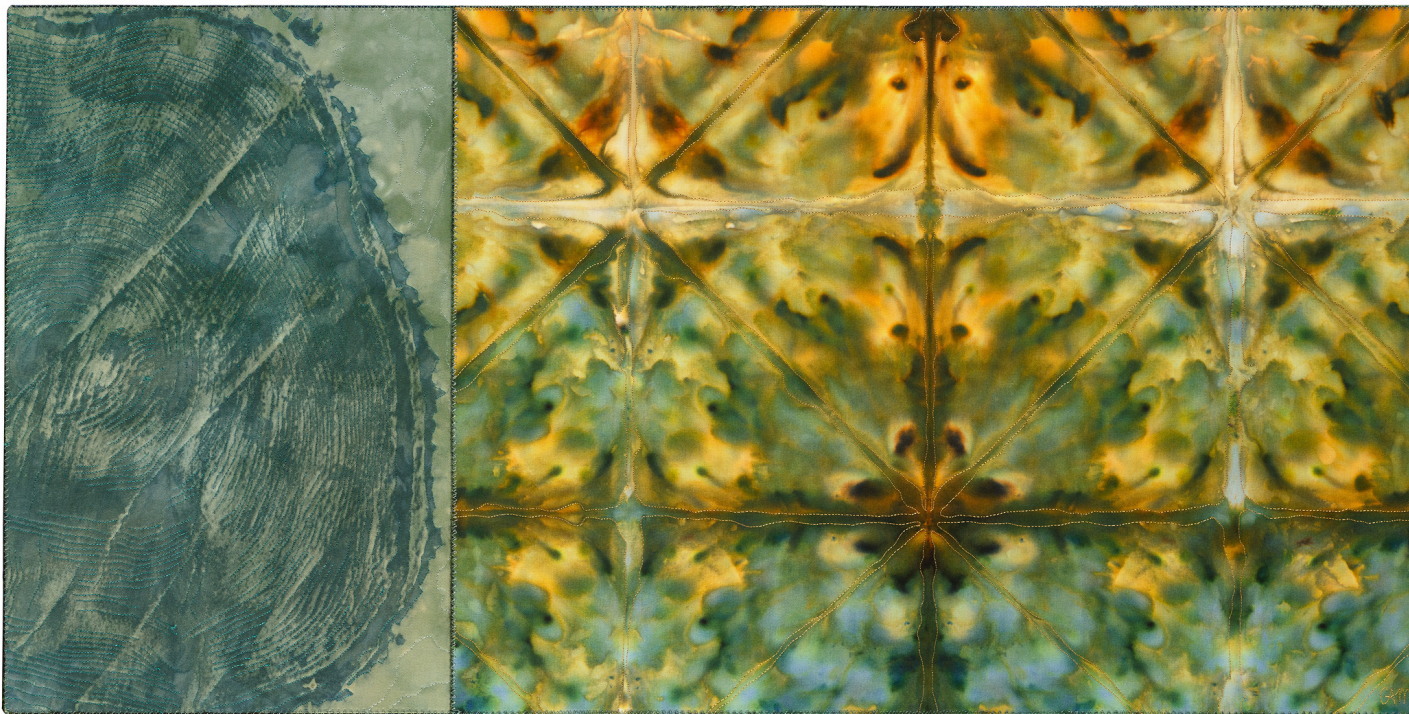


Brier

16.5 X 16.5 inches

Materials: silk, wool yarn, non-woven interfacing, rayon and polyester threads on wood panel

Surface design techniques: free-motion embroidery and monotype



The Pace of Days

16.5 X 33 inches

Materials: cottons, wool yarn, non-woven interfacing, rayon and polyester threads on wood panel

Surface design techniques: free-motion embroidery, tree rubbing, color attractant, folded shibori, ice dyeing, low-water immersion dyeing



Neither Seed Nor Flower

36 X 18 inches

Materials: raw silk, wool yarn,
non-woven interfacing, cotton,
rayon, and polyester threads
on wood panel.

Surface design techniques:
free-motion embroidery,
flour paste resist,
and hand-painted with dyes

Foster/White Gallery

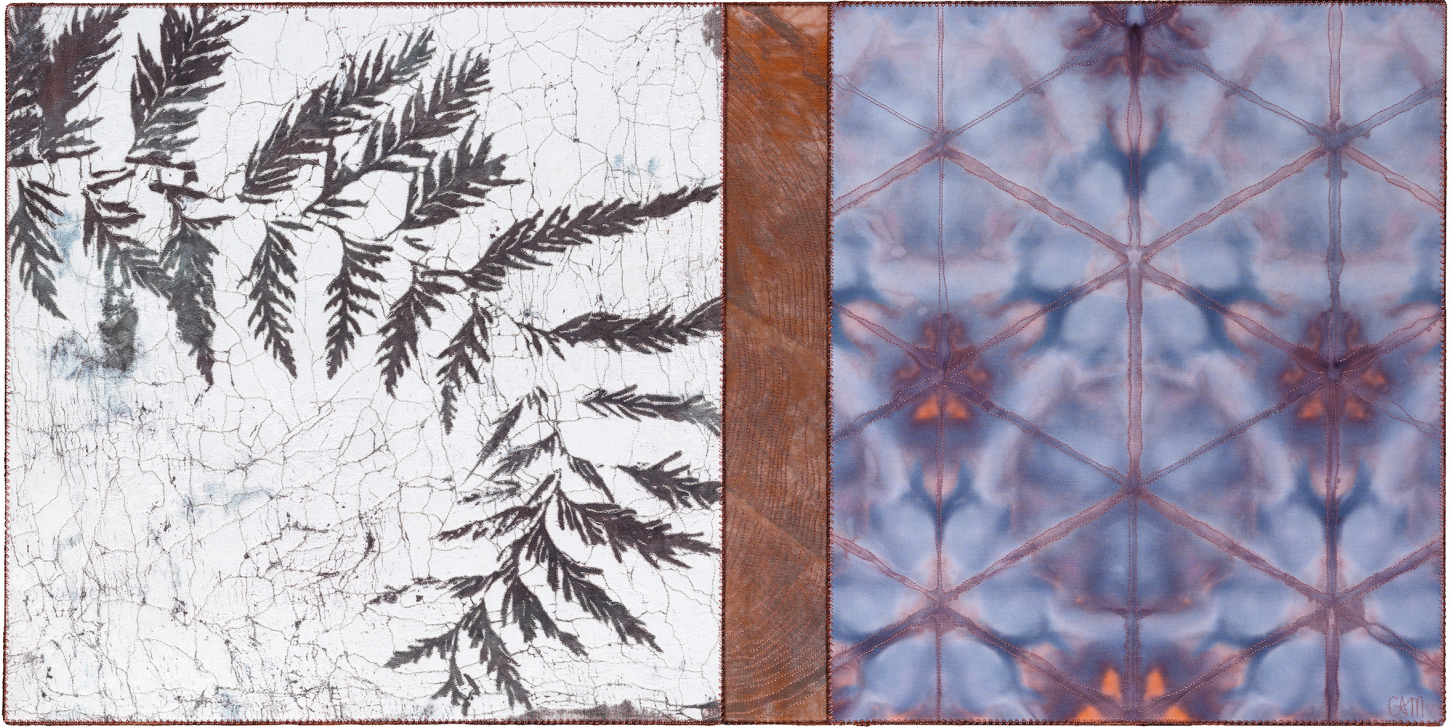


Mullioned

36 X 12 inches

Materials: silk, wool yarn, non-woven interfacing,
rayon and polyester threads on wood panel
Surface design techniques: free-motion embroidery,
folded shibori, wax resist,
low-water immersion dyeing

Cameron Anne Mason



The Pace of Days

16.5 X 33 inches

Materials: cottons, wool yarn, non-woven interfacing, rayon and polyester threads on wood panel

Surface design techniques: free-motion embroidery, tree rubbing, color attractant, folded shibori, ice dyeing, low-water immersion dyeing



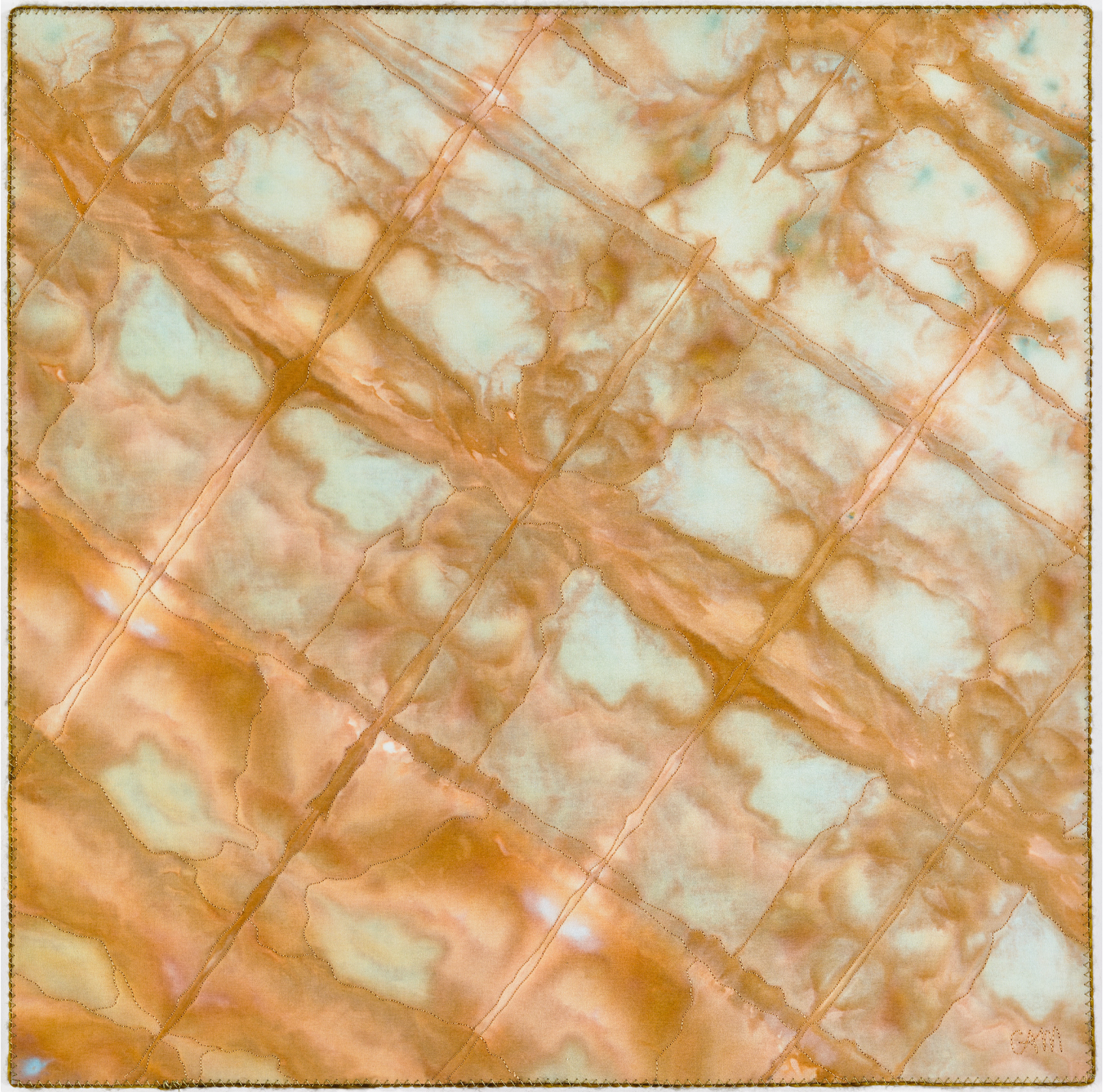
Polystichum

21 x 19.25 inches

Materials: rayon, wool yarn, non-woven interfacing, rayon and polyester threads on wood panel

Surface design techniques: free-motion embroidery and monotype

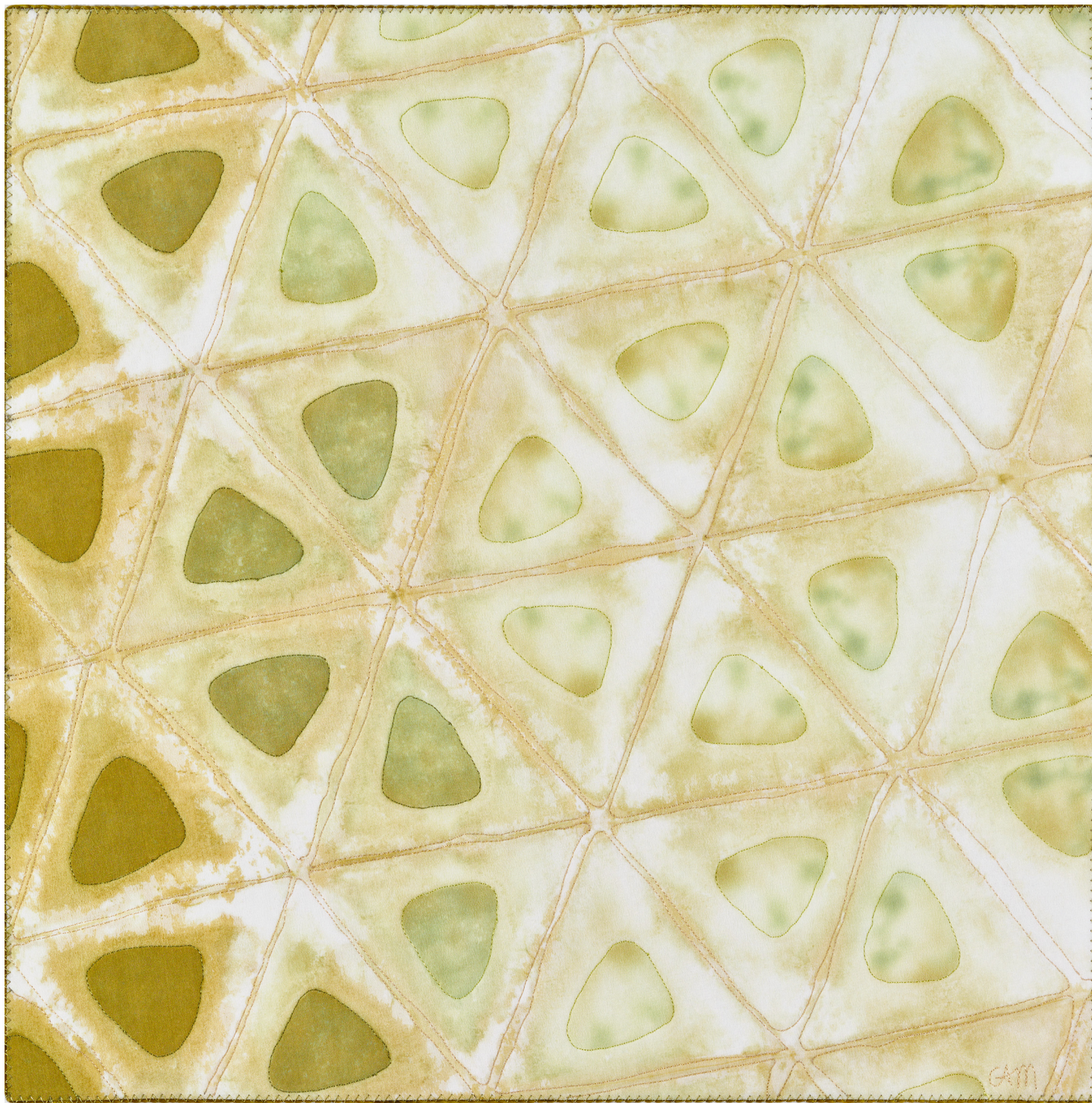
Cameron Anne Mason



Melt

16.5 x 16.5 inches

Materials: silk, cottons, wool yarn, non-woven interfacing, rayon and polyester threads on wood panel.
Surface design techniques: free-motion embroidery, folded shibori, and ice dyeing

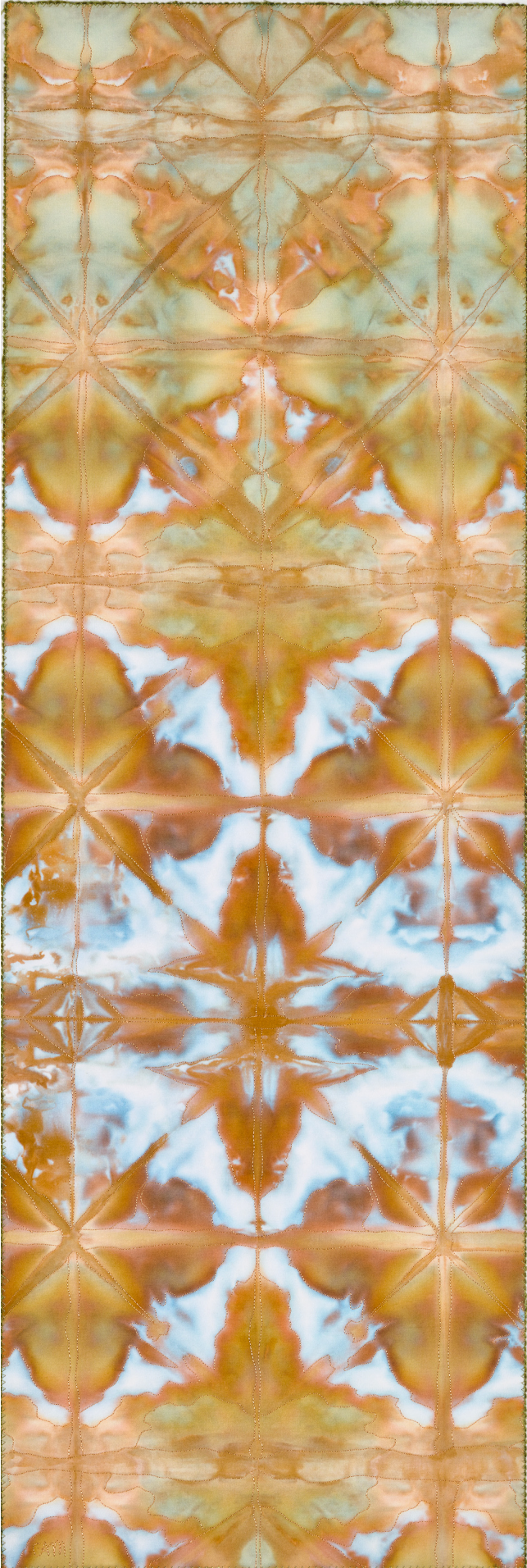


Resist

16.5 x 16.5 inches

Materials: silk, wool yarn, non-woven interfacing, rayon and polyester threads on wood panel

Surface design techniques: free-motion embroidery, folded shibori, wax resist, low-water immersion dyeing



Casement

36 x 12 inches

Materials: cottons, wool yarn, non-woven interfacing,
rayon and polyester threads on wood panel

Surface design techniques: free-motion embroidery,
folded shibori, ice dyeing

Foster/White Gallery



The Unmade Bed

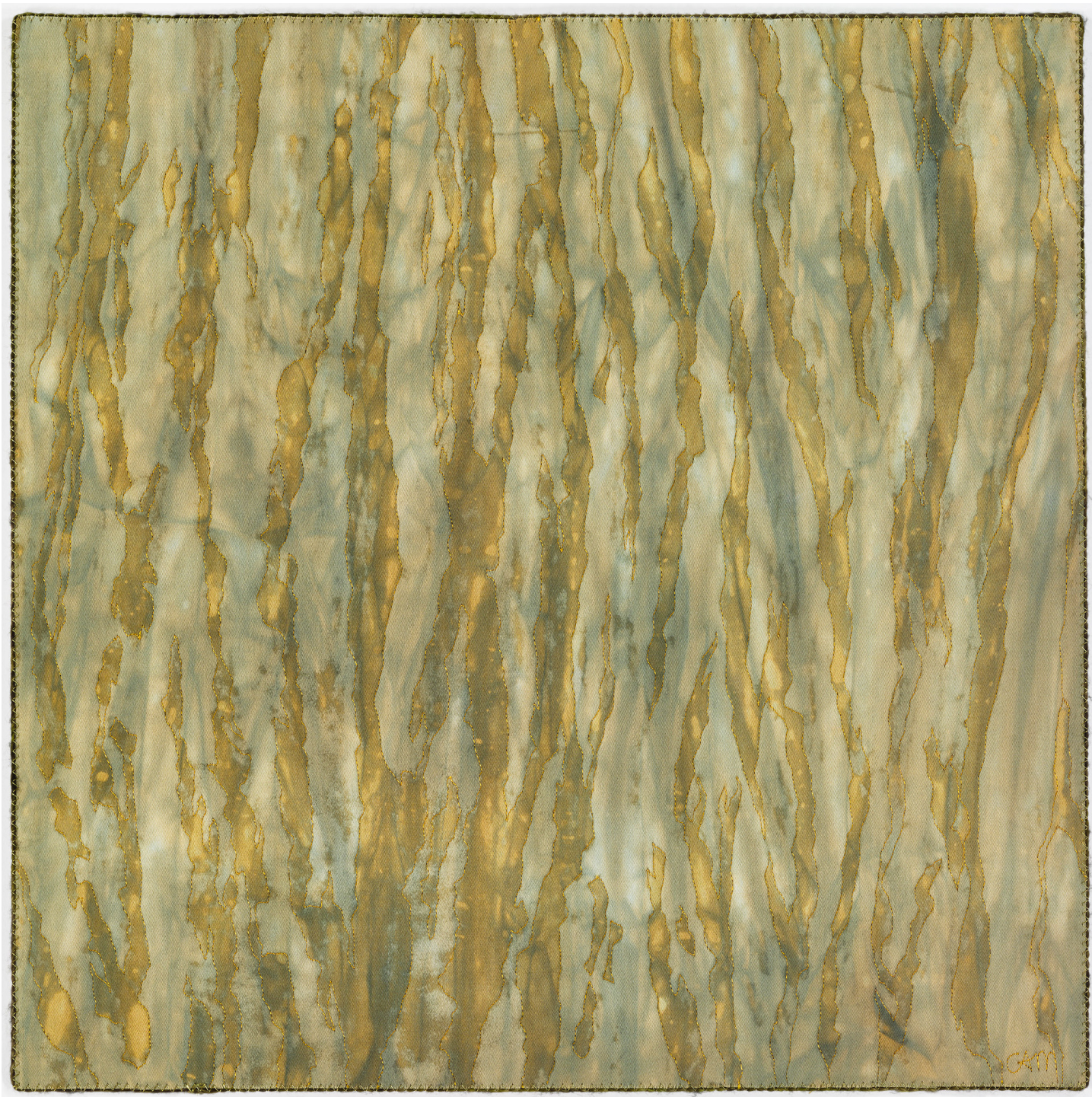
31 x 18.5 inches

Materials: silk
crepe de chine,
wool yarn, non-
woven interfacing,
rayon and
polyester threads
on wood panel
Surface design
techniques: free-
motion embroidery
and monotype



*The Uninvited
Guest*

31 x 18.5 inches
Materials: raw silk,
wool yarn, non-
woven interfacing,
rayon and
polyester threads
on wood panel
Surface design
techniques: free-
motion embroidery
and monotype



Attract

16.5 x 16.5 inches

Materials: cotton, wool yarn, non-woven interfacing, rayon and polyester threads on wood panel

Surface design techniques: free-motion embroidery, tree rubbing, color attractant,
low-water immersion dyeing

Cameron Anne Mason



Thicket

16.5 x 16.5 inches

Materials: cottons, wool yarn, non-woven interfacing, cotton, rayon, and polyester threads on wood panel
Surface design techniques: free-motion embroidery, monotype, wax resist, low-water immersion dyeing



Innes Arden (pictured front and back)

32 x 10 x 5.25 inches

Materials: cottons, bamboo/cotton, rayon/silk velvet, wool yarn, non-woven interfacing, rayon, cotton, and polyester threads on wood panel

Surface design techniques: free-motion embroidery, monotype, rust dyeing, ice dyeing, tree rubbing, color attractant, flour resist, low-water immersion dyeing



Cameron Anne Mason



Montlake
(pictured front and back)

19.25 x 14.5 x 4 inches
Materials: silk, cotton,
rayon/silk velvet, vintage
linen tablecloth, wool yarn,
non-woven interfacing,
rayon, cotton, and polyester
threads on wood panel
Surface design techniques:
free-motion embroidery,
monotype, folded shibori,
ice dye-ing, low-water
immersion dyeing

Foster/White Gallery



Ravenna (pictured front and back)

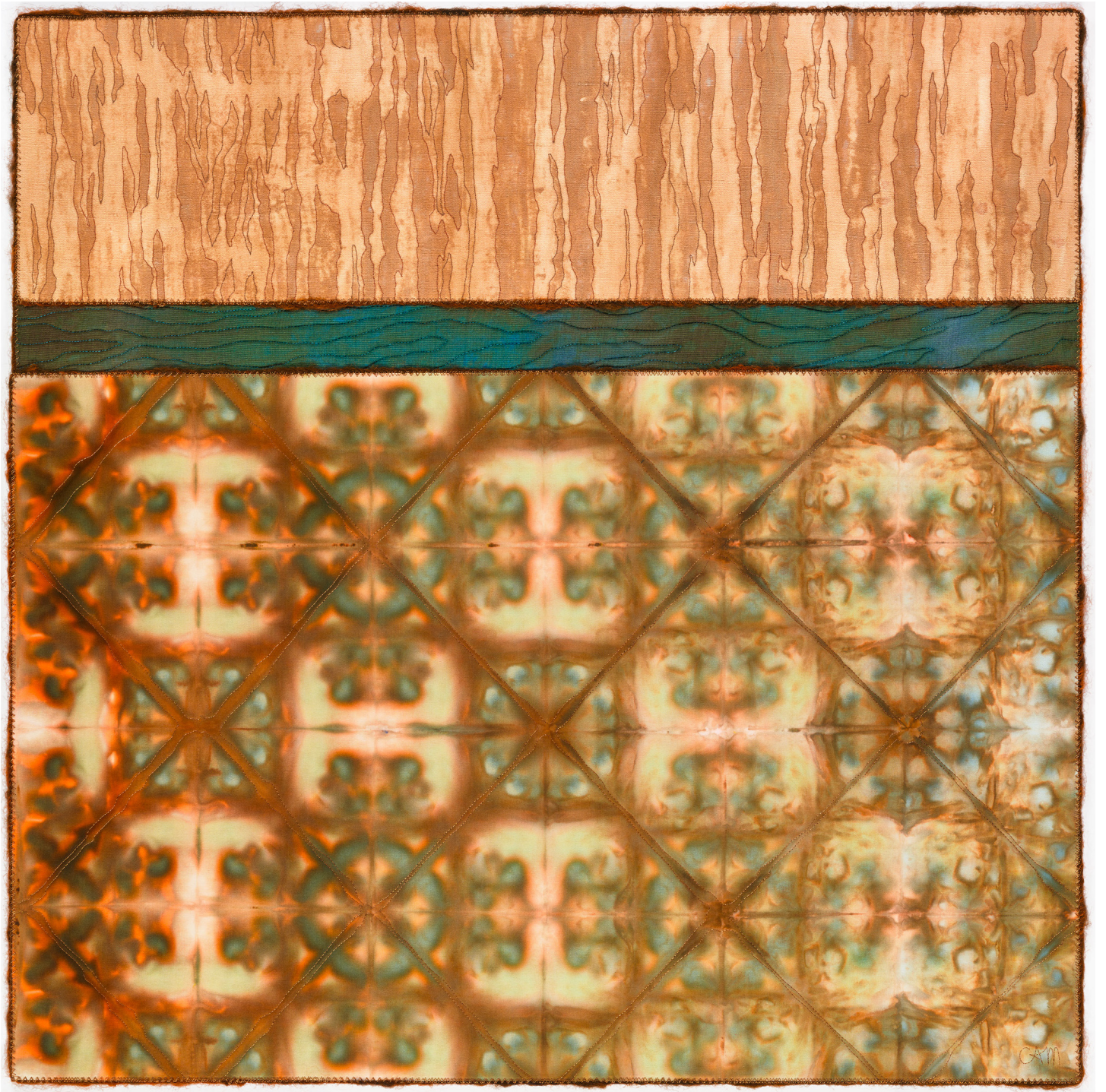
29.75 x 9.75 x 4.5 inches

Materials: silk, rayon-silk velvet, cottons, wool yarn,
non-woven interfacing, cotton, rayon and polyester
threads on wood panel

Surface design techniques: free-motion embroidery,
monotype, wax resist, ice dyeing,
low-water immersion dyeing



Cameron Anne Mason

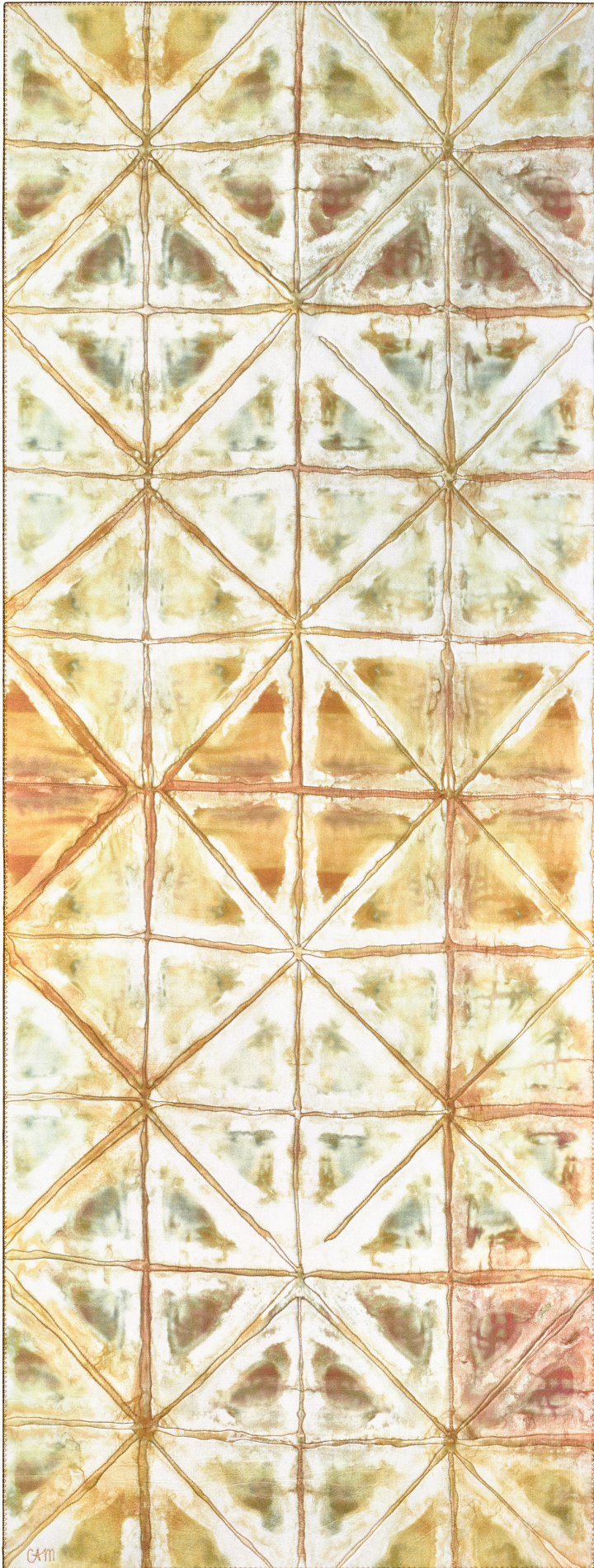


View Protected

26 x 26 inches

Materials: recycled linen tablecloth, rayon-silk velvet, cotton, wool yarn, non-woven interfacing, rayon, cotton, and polyester threads on wood panel

Surface design techniques: free-motion embroidery, tree rubbing, color attractant, folded shibori, ice dyeing, low-water immersion dyeing



Divided Lights

48 x 18 inches

Materials: silk, wool yarn, non-woven
interfacing, cotton, rayon, and polyester
threads on wood panel

Surface design techniques: free-motion
embroidery, folded shibori, wax resist,
low-water immersion dyeing

Cameron Anne Mason



Taxonomy of Rain

21 x 19.25 inches

Materials: silk, rayon, wool yarn, non-woven interfacing, cotton, rayon, and polyester threads on wood panel

Surface design techniques: free-motion embroidery, tree rubbing, flour paste resist, low-water immersion dyeing



The Price of Ripeness

26 x 26 inches

Materials: cotton, silks, wool yarn, non-woven interfacing, rayon and polyester threads on wood panel

Surface design techniques: free-motion embroidery, monotype, arashi shibori, low-water immersion dyeing

Cameron Anne Mason



Vashon (pictured front and back)

26.75 x 8.75 x 4.25 inches

Materials: silks, rayon-silk velvet, rayon, cotton, wool yarn, non-woven interfacing, rayon, cotton, and polyester threads on wood panel

Surface design techniques: free-motion embroidery, monotype, tree rubbing, color at-tractant, folded shibori, wax resist, flour paste resist, low-water immersion dyeing.



Queen Anne (pictured front and back)

25.5 x 10.5 x 3.75 inches

Materials: silks, rayon/silk velvet, cotton, wool yarn, non-woven interfacing, cotton, rayon, and polyester threads on wood panel

Surface design techniques: free-motion embroidery, folded shibori, ice dyeing, dye painting, low-water immersion dyeing



Cameron Anne Mason

CAMERON ANNE MASON

Education

- 1989 Art Institute of Seattle, Honors in Visual Communications, Seattle, WA
- 1983-85 University of Washington, Liberal Arts study

Master Classes

- 2010, 2006 Jane Dunnewold, Coupeville Fine Art Center, Coupeville, WA
- 2005 Marita Dingus, Transforming Textiles, Pratt Fine Arts Center, Seattle, WA
- 2004 Pat Oleszko, Inflatables, Fremont Arts Council, Seattle, WA
- 2001-2003 Surface Design Study Group, Weaving Works, Seattle, WA
- 2000 Ali Pretty, Batik and Design for Performance, Fremont Arts Council, Seattle, WA

Exhibitions

- 2020 'Home | Land,' Foster/White Gallery, Seattle, WA
- 2019 'Fields,' Foster/White Gallery, Seattle, WA
- 2016 'Bellwether Sculpture Biennial,' Bellevue City Hall, Bellevue, WA
- 'Branching,' Foster/White Gallery, Seattle, WA
- 2014 'Whole Cloth: Soft Sculptures by Larry Calkins and Cameron Anne Mason,' Aljona Thornton Place, Seattle, WA
- 2013 'Madrone,' Foster/White Gallery, Seattle, WA
- 2012 'Surface. Form. Stitch.,' Fairbanks Art Gallery, Oregon State University, Corvallis, OR
- 2011 'Soft Earth,' Foster/White Gallery, Seattle, WA
- 2010 New Artist Introduction, Foster/White Gallery, Seattle, WA
- 2009 West Seattle Art Walk, The Body Bar, Seattle, WA
- 2009 'Earth and Sky,' Phinney Center Gallery, Seattle, WA
- 2008 'Surface Tension,' Greenwood Artwalk, The Fiber Gallery, Seattle, WA
- 2007 Greenwood Artwalk, Allusia, Seattle, WA
- 'postCARDS: 52 weeks, 52 cards,' Bothell Public Library, Bothell, WA

Installations

- 2018 'Sky Bound,' Burning Man Festival, Black Rock City, NV
- 2014 'Playastan Crossroads,' Burning Man Festival, Black Rock City, NV
- 2013 'Susurrations,' Storefronts Bellevue, Bellevue, WA
- 'Soft Coral,' Bellevue Arts Museum Featured Object, Bellevue, WA
- 2012 'The Orchard Room,' Heaven and Earth IV: Rootbound, Center on Contemporary Art
- Temporary Installation, Seattle, WA
- 'Fantastic Fibers,' Jurors Choice Recognition, Yeisler Art Center, Paducah, KY
- 'Bellwether Art Walk,' Bellevue, WA
- 2008 Seen/Unseen, STart on Broadway, Sound Transit Temporary Installations, Seattle, WA
- Living Room, Oregon Country Fair, Veneta, OR
- 2007 Nurse Log, Winter Solstice Feast, Seattle, WA
- 2004 The Color Wheel, Winter Solstice Feast, Seattle, WA
- 2003 Lanterns, Winter Solstice Feast, Seattle, WA
- 2000 The Turning of the Year, Winter Solstice Feast, Seattle, WA

Selected Group Shows

2018	'Contemporâneo 2019,' São Paulo & Rio, Brazil
2017	'Fiber Fusion,' Schack Art Center, Everett, WA
2014	'Gea,' 'Miniartextile,' Como, Italy 'Forming,' Alden B. Dow Museum of Science and Art, Midland Center for the Arts, Midland, MI 'Reaching Beyond: Northwest Designer Craftsman at 60,' Whatcom Museum, Bellingham, WA 'Bellwether,' Bellevue, WA
2013	'Dancing Surfaces: Surface Design Association,' Washington, Seattle, WA Anacortes Arts Festival: Juried Arts at the Port, Anacortes, WA Surface Design Association Members Show, San Antonio, TX 'Salsa: CQA at the Mighty Tieton,' Tieton, WA 'Fantastic Fibers,' Paducah, KY
2012	'Bellwether: reGeneration,' Bellevue, WA 'The Softer Side of Death,' Lundgren Monuments, Seattle, WA 'Preview Exhibition,' Foster/White Gallery, Seattle, WA 'Freedom to See Ourselves: A Celebration of Culture,' WSU Tri-Cities Art Center, Richland, WA
2011	'Craftforms,' Wayne Art Center, Wayne, PA 'Set the Table for SAM,' Seattle Art Museum Event, Seattle, WA 'Easelstan 5 @ 10,' Phinney Center Gallery, Seattle, WA Rio Patchwork Design Show, Rio de Janeiro, Brazil
2010	'Olive Branch,' Foster/White Gallery, Seattle, WA Bellwether Art Walk, Bellevue, WA
2010	Rio Patchwork Design Show, Rio de Janeiro, Brazil, Audience Choice Award Pratt Instructor's Show, Seattle City Hall, Seattle, WA 'MadArts Redux,' Foster White Gallery, Seattle, WA 'Fantastic Fibers,' Yeiser Art Center, Paducah, KY 'Beyond Convention,' Washington State Convention and Trade Center, Seattle, WA
2009	'Soft Forms,' Pratt Gallery at Tashiro Kaplan Studios, Seattle, WA 'Beyond the Block,' Seattle City Hall, Seattle, WA
2008	'Stitched and Bound,' Sammamish Library, Sammamish, WA
2007	'Evolution of the Art Quilt,' Washington State Historical Museum, Tacoma, WA
2006	'Traditions Transformed,' Textile Center, Minneapolis, MN 'Uncommon Thread,' Blue Heron Gallery, Vashon Island, WA 'Ebb & Flow,' Penn Cove Pottery, Coupeville, WA 'Quilt. Fiber. Art.,' Washington Center for Performing Arts, Olympia, WA
2005	Greenwood ArtWalk, Juror's Top Pick, Seattle, WA 'Water's Edge,' Seattle Aquarium, Seattle, WA

Awards

2012	Honorable Mention, Freedom to See Ourselves: A Celebration of Culture
2010	Juror's Choice Award, Fantastic Fibers Audience Choice Award, Rio Patchwork Design
2005	Juror's Top Pick, Greenwood Art Walk

Teaching

- 2005-present Pratt Fine Arts Center, Surface Design instructor, Seattle, WA
2012 Workshop Instructor, SDA/SAQA Conference, Identity: Context and Reflection, Philadelphia, PA
Guest Instructor, University of Washington School of Art, Seattle, WA
2011 Instructor, Made Sewing Studio, Seattle, WA
2010 Pratt Fine Arts Center, Workshop Instructor, 'Beyond Techniques,' Seattle, WA
2007-2010 Instructor, Space to Create, Surface Design
2009 Batik Workshop, Oregon Country Fair, Veneta, OR
2008 Bellevue Arts Museum, Demonstration of Surface Design technique
Contemporary Quilt Art Association, Presentation Festival Arts:
Community, Artistry, Celebration
Batik Workshop, Seattle Tilth, Seattle, WA
2002 Giant Puppet Installation and Public Art Booth, Bumbershoot, Seattle, WA
2001 Giant Puppet Workshop, Salmon Summit, Leavenworth, WA
2001 Giant Puppet Installation and Public Art Booth, Bumbershoot, Seattle, WA
2001 Visiting Artist Program Coordinator, Fremont Arts Council, Seattle, WA
Associations
2010-present Surface Design Association Seattle
2009-present Northwest Designer Craftsman
2006-present Surface Design Association
2004-present Contemporary Quilt Arts Association, Board positions: Programs co-chair
2011-12, Arts Liaison 2010, Showcase Chair 2007-2009
1989-present Fremont Arts Council Member, Secretary 1991-1993, Board Member
1991-1995

Bibliography

- 2012 Michael Upchurch, '2 artists let old books tell new stories,' The Seattle Times Weekend Plus,
July 20, pg. 24

FOSTER/WHITE GALLERY

220 Third Avenue South #100, Seattle, Washington 98104

www.fosterwhite.com