



GEORGE RODRIGUEZ

BENEATH THE SURFACE

APRIL 2016

ARTIST RECEPTION

APRIL 7, 6-8PM

ARTIST TALK

APRIL 9, 2-4PM



Beneath the Surface, George Rodriguez's solo show this April continues the artist's exploration of community, celebration, and remembrance. Rodriguez's inspirations are drawn from experiences traveling to 26 different countries on three continents through the Bonderman Travel Fellowship. Expanding on his studies of global culture and ceremony, this latest work bridges Rodriguez's Chicano heritage with Thai, Peruvian, Bolivian, Mongolian, Egyptian, Taiwanese, and Indonesian civilization and mythology.

Alongside burials, offerings and rituals weave a common thread through all cultures that unite communities. Often these events are times for celebration like Dia de los Muertos, the Day of the Dead. Flowers upon flowers are Rodriguez's signature of laughter, festivity, and observance. His works, which bloom from head to toe, urge the viewer to experience joy, nostalgia and acceptance. As the artist states, "Flowers are a symbol of offering and care that I find visually beautiful. They make me smile."

Beginning with a prominent feature at the internationally recognized sculpture art fair, SOFA Chicago, Rodriguez has enjoyed increased recognition in the broader arts community in the last year. His sculptural ceramic heads, which reverently nod to his Mexican heritage, were a fair-goer favorite. The exposure at SOFA intrigued Chicago's National Mexican Museum of Art, which invited him into its permanent collection with plans to exhibit his work 'Reaper' in the annual Day of the Dead show. Rodriguez is also featured this March/April at the Museum of Northwest Art's show 'Beyond Aztlan: Mexican and Chicano/a Artists in the Pacific Northwest.'

Mykyta, ceramic with glaze, 17 X 13 X 15 inches

Cover image: *Batu*, ceramic with glaze, 20 x 13 x 14 inches



Serrao, ceramic with glaze, 17.5 X 13 X 16 inches



Manco, ceramic with glaze, 20 X 12 X 15 inches



Narmer, ceramic with glaze, 17.5 X 12 X 15 inches



Blandus, ceramic with glaze, 17 X 13 X 16 in inches



Hanuman, ceramic with glaze, 28 X 18 X 13 inches



Companion #7, ceramic with glaze 28 X 16 X 9 inches



Companion #6, ceramic with glaze, 27 X 10 X 10 inches

Companion #9, ceramic with glaze, 28 X 13 X 10 in





Companion #8, ceramic with glaze, 26 X 9 X 9 inches







Tomb Guide, ceramic with glaze, 14 X 6 X 6 inches





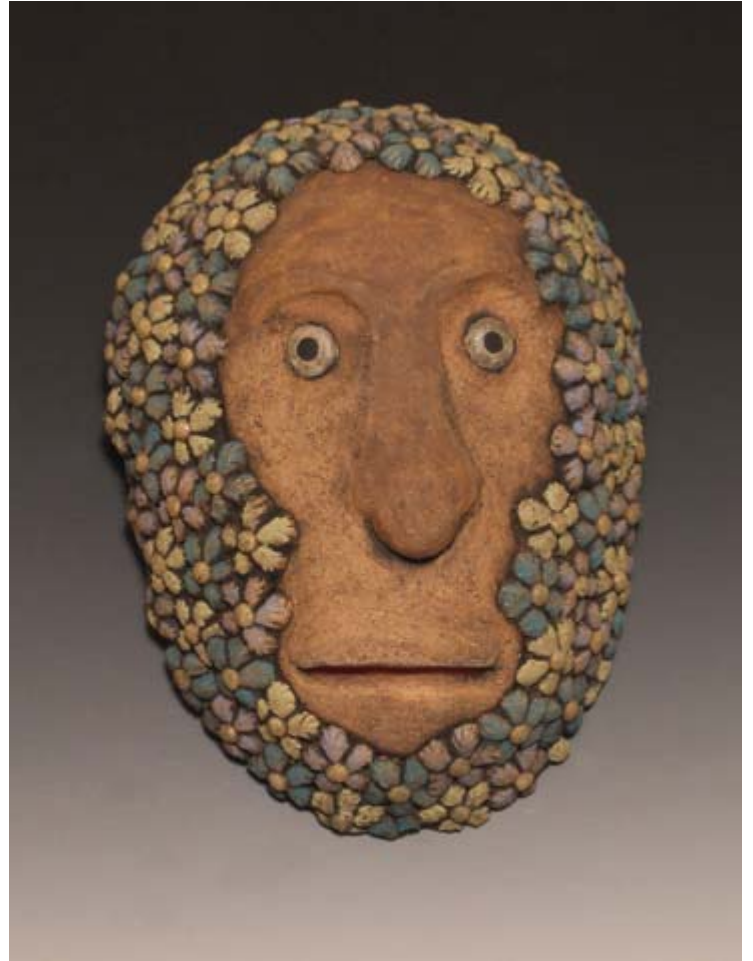














Monkey: Tamarin, ceramic with glaze, 13.5 X 9 X 4 inches

Monkey: Saki, ceramic with glaze, 13.5 X 10 X 4 inches





Monkey: Bela, ceramic with glaze, 13.5 X 10 X 4.5 inches
Monkey: Wiser, ceramic with glaze, 12 X 9 X 4 inches





GEORGE RODRIGUEZ

Education

- 2009 MFA Ceramics, University of Washington, Seattle, WA
- 2006 BFA Ceramics, University of Texas, El Paso, Texas

Solo Exhibitions

- 2016 'Beneath the Surface,' Foster/White Gallery, Seattle, WA
- 2014 'Here After,' Foster/White Gallery, Seattle, WA
- 2012 'In Costume,' Foster/White Gallery, Seattle, WA
- 'End of the Trail,' Pottery Northwest, Seattle, WA
- 'Instrumental Divide,' Rainier Tower, Jeffrey Moose Gallery, Seattle, WA
- 2011 'GEORGE,' Foster/White Gallery, Seattle, WA
- 'Symbiotic/Parasitic,' KOBO at Higo, Seattle, WA
- 2009 'The Belle of the Ball,' Ceramic Metal Arts Gallery, Seattle, WA
- 2006 'Recess,' Memorial Triangle, University of Texas El Paso, El Paso, TX

Group Exhibitions

- 2016 'Beyond Aztlán: Mexican and Chicana/o Artists in the Pacific Northwest,' Museum of Northwest Art, La Conner, WA
- 2015 SOFA Exposition, Navy Pier, Chicago, IL
- Samsøen collaborative sculptural installation with Mark Cooper, Seattle Art Fair,
- Paul Allen Living Computer Museum, Seattle, WA
- 'FEAT: Fellowship Exhibit Artist Trust,' Galvanize, Seattle, WA
- 'Out of Sight,' King Street Station, Seattle, WA
- 'Ceramics Invitational: Northwest Clay,' Traver Gallery, Seattle, WA
- 'Art in True Fashion,' Abmeyer + Wood Fine Art, Seattle, WA
- 2014 'Tree of Life,' Helen S. Smith Gallery, Green River Community College, Auburn, WA

- 2013 'Mostra/UGA,' Palazzo Vagnotti, Cortona, Italy
- 'Cute,' Blindfold Gallery, Seattle, WA
- 'Maneki Neko: Japan's Beckoning Cats- from Talisman to Pop Icon,' Bellevue Art Museum, Bellevue, WA
- 'Beyond the Brickyard,' Archie Bray Foundation, Helena, MT
- 'Speaks Volumes,' SPCS Gallery, Seattle Design Center, Seattle, WA
- 2012 'Flattery,' The Nicklas Gallery, Seattle, WA
- 'Clay Lives Here,' NCECA, Seattle Design Center, Seattle, WA
- 2012 'Stations of the Cross,' St. James Cathedral, Seattle, WA
- 'The Potter and the Urn,' Greg Lundgren Monuments, Seattle, WA
- 2011 '360 Collaboration,' Pottery Northwest, Seattle, WA
- 2010 'MADArt Redux,' Foster White Gallery, Seattle, WA
- 2009 'MADArt Windows Exhibition,' Madison Park Shops, Seattle, WA
- '2009 University of Washington MFA Thesis Exhibition,' Henry Art Gallery, Seattle, WA
- 'Mentoring,' SAM Gallery, Seattle, WA
- 'Ouch My Eye Annual International Invitational,' Ouch My Eye Gallery, Seattle, WA
- 'International Cup,' The Clay Studio of Missoula, Missoula, MT
- 2008 'Heads(dis) Embodied,' Kirkland Arts Center, Kirkland, WA
- 'Flash Forward: Coupling VI,' Ouch My Eye Gallery, Seattle, WA
- 2007 'Reality and Fantasy – the art of play,' Gallery at Mars Hill, El Paso, TX
- 'From the Ground Up XXIII,' Las Cruces Museum of Art, Las Cruces, NM
- 'Contenido Neto (a rational play on the possibilities of an intercultural world),' 301 W. Overland, El Paso, TX
- 2006 'The Value Show,' 910 Texas St., El Paso, TX
- 'Action of the Heat,' Union Gallery, University of Texas El Paso, El Paso, TX
- 2005 'National Society for Arts and Letters Exhibit,' Glass Gallery, University of Texas El Paso, El Paso, TX
- 'Fresh Talent '05,' Crossland Gallery, El Paso, TX
- 2004 'Art from the Epicenter,' Project Space, University of Texas El Paso, El Paso, TX

Awards

- 2011 GAP Grant, Artist Trust, Seattle, WA
- Resident Artist Project (RAP) Grant, Pottery Northwest, Seattle, WA
- 2009 Bonderman Travel Fellowship, University of Washington, Seattle, WA
- Individual Artist Projects Grant, 4 Culture, Seattle, WA
- smART Ventures, City of Seattle –Office of Arts & Cultural Affairs, Seattle, WA

- 2007 Graduate Opportunities & Minority Achievement Program Research Assistantship, University of Washington, Seattle, WA
- 2006 Regina Brown Undergraduate Student Fellowship, National Council on Education for the Ceramic Arts, Erie, CO
New Mexico Potter's Guild Award, Potter's Guild of Las Cruces, Las Cruces, NM
Award of Excellence for Sculpture Student, University of Texas, El Paso, TX
- 2005 Catherine Crowell Belk Art Scholarship, University of Texas, El Paso, TX
- 2004 Manuel Acosta Memorial Art Scholarship, University of Texas, El Paso, TX

Publications

- 2015 Hanus, Julie. "Let it Grow" American Craft. August/ September 2015. p.48-57.
Harnetty, Jennifer. "Studio Visit: Deborah Schwartzkopf and George Rodriguez." Ceramics Monthly. March 2015. p. 30-34.
- 2014 Smith, Nan. "500 Figures in Clay Volume 2." Lark Books. Sterling Publishing Co. 2014.
- 2013 Upchurch, Michael. "Flower Power with a Philosophical Twist." The Seattle Times.
- 2012 "Seattle Artist ReDesign the Waterfront." The Stranger. Seattle Art & Performance Fall Issue. September 5, 2012; pg 13.
Webb, Dan & Matthew Offenbacher. Jeffry Mitchell – Closed Fist Open Hand. "Joy in Repetition, 1991" La Norda Press. 2012.
Davis, Branglen. "Local Rock Stars of Clay." Seattle Magazine. March 2012.
Kangas, Matthew. "Symbolic/Parasitic." Ceramics Monthly. February 2012. p. 62-63.
- 2011 Faigin, Gary. "Heads Up: George Rodriguez at Foster White." Artdish Magazine. November 25, 2011.
"Famous Georges make for fun sculpture." Narr. Gary Faigin & Jeannie Yandel. KUOW Presents. 94.9 KUOW Seattle NPR. November 21, 2011.
"George." Sheila Hartley. Art Talker. 98.1 KING FM. November 5, 2011.
Upchurch, Michael. "Storefronts Seattle puts art and life in empty retail spaces." Art Review. The Seattle Times. August 25, 2011.
- 2009 Lambert. Ken. "Ceramic work is music to your eyes." The Seattle Times. June 6, 2009.
Stoesz, David. "If it walks like art..." Seattle Weekly. June 02, 2009.
- 2008 Norris, Molly. "Heads (dis) Embodied." Art Access, Volume 17. June 2008, pgs 10-11.
Farr, Sheila. "Here's a heads-up for a must-see." The Seattle Times. May 16, 2008. pg 41

Collections

National Museum of Mexican Art, Chicago, IL
Bellevue Art Museum, Bellevue, WA
Sam and Anne Davis, El Paso, TX
MADart, Seattle, WA
Swedish Medical Center, Seattle, WA

Professional Experience

Lecture, Kansas City, NCECA Invitational (March, 2016)
Featured speaker, SOFA Chicago (October, 2015)
Visiting Lecturer, University of Washington. Seattle, WA
Visiting Lecturer, Sitka Fine Arts Camp. Sitka, AK
Selection Committee, Bonderman Travel Fellowship- University of Washington.
Instructor, Moshier Community Clay Studio. Burien, WA
Instructor, Seward Park Clay Studio. Seattle, WA
Instructor, Redmond Clay Studio. Redmond, WA
Visiting Lecturer, Lamar Dodd School of Art. UGA. Study Abroad Program. Cortona, Italy.
Lecture, Bellevue Art Museum - Pecha Kucha: Luck of the Draw (May 3rd, 2013)
Selection Committee, Grants for Artist Project (GAP) Grant- Artist Trust. Washington.
Instructor, GAGE Academy of Art. Teen Art Studio. Seattle, WA
Visiting Lecturer, Green River Community College. Auburn, WA
Lecture, Bellevue Art Museum - NCECA Invitational (Feb 3rd, 2012)
Selection Committee, Artisan Tile NW - Tile Heritage Prize.
Artist in Residence and Instructor, Pottery Northwest. Seattle, WA
Invited Artist, SAM Set the Table. Seattle Art Museum. Olympic Sculpture Park. Seattle, WA
Visiting Instructor, Nathan Hale High School. Seattle, WA
Instructor, Kirkland Art Center. Kirkland, WA

FOSTER/WHITE GALLERY

220 THIRD AVENUE SOUTH, SEATTLE WA 98104 TELEPHONE : 206.622.2833
SEATTLE@FOSTERWHITE.COM WWW.FOSTERWHITE.COM